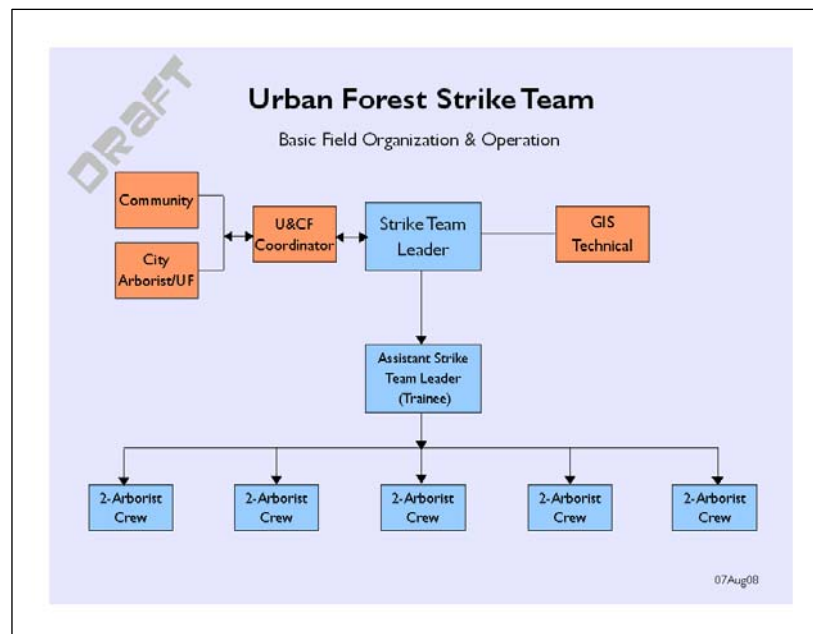


Urban Forest Strike Team(s) are designed to operate within the Incident Command System (ICS) and therefore much of the organizational structure and function will be dictated by that system. However, the role of the state forestry agency and particularly the state U&CF Coordinator may be unique to this ICS specialty and implementation.

**Proposed Organizational Chart (Team)<sup>1</sup>:**



The U&CF Coordinator plays an active role in UFST response in several capacities:

1. Is the first, local (regional) contact with affected communities relative to protection and assessment of urban forest resources.
2. Determines whether UFST mobilization is appropriate for a community.
3. Makes the initial assessment of disaster scale (spatial extent and severity).
4. Communicates that assessment through the State Forester and state Emergency Management.
5. Works with the community to request appropriate resources through appropriate channels (Southern Compacts, State EM, ROSS)
6. Directly notifies other state U&CF Coordinators of need & ICS requests.
7. Coordinates with Team Leader(s) when UFST is mobilized.
8. Functions as the UFST community liaison throughout the incident response.

<sup>1</sup> See UFST Glossary for detailed descriptions and explanations of terms used.

Working Draft Narrative v1.2

As the state U&CF Coordinator makes these contacts and assessments a "Contact List" should be created for each community where UFSTs will be working. This is a template or guide and not all contacts may be appropriate for an incident; titles of individuals should be included. For example, under "City Administration", you might list the Mayor or City Manager depending on the type of municipal management; if the "City Arborist" is actually the County Forester you should indicate that position title with the contact name or change the table heading as desired. Rows not needed for a particular response may be deleted, and additional rows may be added. This information will be provided to the Team Leader(s) (see Checklists that follow).

**Coordinator/Team Leader – Contact List Template<sup>2</sup>**

**Community:** \_\_\_\_\_

Individuals/Organization	Address Information (FedEx/UPS)	
State Forester		1
State U&CF Coordinator		2
City Administration		3
City Departmental Contact		4
Municipal Arborist		5
GIS Specialist		6
IT Specialist		7
County Emergency Management Director		8
State Emergency Management (Debris)		9

<sup>2</sup> See UFST Glossary for detailed descriptions and explanations of terms used.

*Working Draft w/Narrative v1.2*

Individuals/Organization	Address Information (FedEx/UPS)	
<b>Debris Managers (State or FEMA as appropriate)</b>		<b>10</b>
<b>Other State or FEMA Regional</b>		<b>11</b>
<b>Urban Forestry South</b> Dudley R. Hartel, Center Manager (706) 559-4236, (706) 410-5568 (cell) Eric Kuehler, TT Specialist (706) 559-4268, (706) 410-5569 (cell)	USDA Forest Service 320 Green St Athens, GA 30602	<b>12</b>
<b>USDA Forest Service Regional Office</b> Ed Macie, Regional U&CF Coordinator (404) 347-1647, (404) 909-0266 (cell) Kay Reed, Interface Program Manager (404) 347-6218, (404) 805-8827 (cell)	USDA Forest Service 1720 Peachtree Road, N.W., Ste 846 N Atlanta, GA 30309	<b>13</b>