

Southern Area Interagency Mobilization Guide

Chapter 100 – Southeastern and South Central Compacts

100 COMPACT AUTHORITY/ACTIVATION

The mobilization plan is authorized under Article V of the Southeastern States Forest Fire Compact Commission Bylaws and Article V of the South Central States Fire Compact Commission Bylaws.

Officers of the Southeastern States Forest Fire Compact Commission are filled annually on a rotation basis.

Chair:	Gene Kodama (South Carolina)
Vice-Chair	Steve Scott (Tennessee)
Secretary-Treasurer:	Carl Garrison (Virginia)

Officers of the South Central States Forest Fire Protection Compact are filled on an annual rotation. Current (2007-2008) officers are as followed:

Chair:	John Burwell (Oklahoma)
Vice Chair:	Jim Hull (Texas)
Secretary-Treasurer:	John Shannon (Arkansas)

The Compact Coordinator for both Compacts is ordinarily the Forest Service Fire and Aviation Emergency Operations officer, and the Deputy Compact Coordinator is the Southern Area Coordinator. Current incumbents are:

Compact Coordinator:	Steve Weaver, (F&AM Emergency Operations)
Deputy Coordinator:	Vacant (F&AM, SACC)

Either Compact is activated when the Compact Coordinator or Deputy is notified by a member state, or when a member state places a compact resource order requesting resources (see "Mobilization" below). When one Compact is activated, the Compact Coordinator or Deputy will notify the Chair of the Southeast and the South Central Compacts.

Bylaws of both Compacts have provision for reimbursement of costs of dispatching assistance; however, this aspect is left to the members involved for determination.

Southern Area Interagency Mobilization Guide

Chapter 100 – Southeastern and South Central Compacts

101 OBJECTIVES AND CONTENT

- A. Provide an orderly, timely, cost efficient method of providing aid to requesting Compact States.
- B. Ensure that aid can be obtained within 12 hours of initial request.
- C. Provide a system to collect and distribute timely fire information between Compact States.
- D. Provide a means of dispatching resources both within and outside the Compact.
- E. Provide a method of Compact Incident Reviews.
- F. Establish a listing of compact resources.

102 MUTUAL AID PROCEDURES

102.1 PREMOBILIZATION

1. Each Compact State will furnish the Coordinator with a listing of resources available as outlined in the appendix by January 1 each year. (APPENDIX H)
2. Daily fire activity will be reported by the States (via their State Coordination Center) to the Compact Coordinator using the following (APPENDIX A):
 - a. Number of Fires.
 - b. Acres burned.
 - c. Pertinent fire danger information (weather, etc.).
 - d. Synopsis of previous day activity (property damage, etc.).

102.2 MOBILIZATION

1. Compact Activation: Coordinator will advise Compact Chairman that Compact has been activated and keep the Compact Chairman advised.

Southern Area Interagency Mobilization Guide

Chapter 100 – Southeastern and South Central Compacts

2. Aid Request:
 - a. Unlike co-op resource orders, which are processed by the State Interagency Coordination Centers, compact resource orders are placed by the requesting State directly with SACC.
 - b. Requesting State will contact the Compact Coordinator outlining its needs as to personnel, equipment, or other support. A resource order form will be completed by the requesting State and faxed to SACC.
 - c. Compact State Aid Available - The Coordinator will contact the compact State best able to meet the request.
 - d. No Compact Aid Available - The Coordinator will continue to contact other States, U.S. Forest Service, cooperators, other fire protection compacts, and other sources until the requested resources are located. Requesting State will be contacted for decision before a firm order is made.
 - e. Dispatch Procedure - The Coordinator will work with both the receiving and sending agency to coordinate times, places, equipment transportation, and lengths of service.
3. Liaison Officer: A Liaison Officer from the aiding State shall be provided when multiple crews are requested, i.e., two tractor units - one liaison officer; six tractor units- two liaison officers.
4. Interstate Equipment Travel Restrictions: The Coordinator will work with individual States to provide appropriate clearances.
5. Information:
 - a. Information regarding Compact crews within a receiving State will be passed through the Coordinator to the sending State.
 - b. Information regarding the news media will be handled by each State.
 - c. The Compact Coordinator shall be prepared to provide information on general Compact activities.

Southern Area Interagency Mobilization Guide

Chapter 100 – Southeastern and South Central Compacts

6. Food and sleeping Facilities: These will be provided by the receiving State; unless other arrangements are made in advance.
7. Supervision: On-the-fire supervision work will usually be provided by the receiving State. However, if the State does not have sufficient qualified overhead then appropriate overhead should be requested through the Compact.
8. Pay Rates: Personnel and equipment reimbursements will be at the current rates currently published by respective states. The rates provided in Appendix H should be regarded as examples only and subject to change.
9. The sending State will supply sufficient communications equipment for its crews to interface with the receiving State. Additional communication support should be ordered through Coordinator.

102.3 DEMOBILIZATION

1. Release priority: Out of State personnel and equipment shall be released as soon as fire conditions warrant. The Coordinator shall be notified when release is imminent and when accomplished. It shall be the Coordinator's responsibility to notify the States when their crews are released, and relay their E.T.A. at headquarters.
2. Equipment Return: The receiving State is responsible for repair or reimbursement for damaged or lost tools and equipment. Records of hours and/or miles used must be returned with equipment so that servicing or overhaul can be arranged. The sending State should send mechanically sound equipment. The receiving State should make notations of any equipment deficiency upon arrival.
3. Reimbursement Vouchers: The sending State will send the receiving State reimbursement vouchers within 30 days after return of personnel and/or equipment.
4. Narrative Report: Both the sending and receiving States will send a written critique on all phases of their part of the mutual aid operation to the Compact Coordinator. This report will serve as supporting material for incident reviews.

Southern Area Interagency Mobilization Guide

Chapter 100 – Southeastern and South Central Compacts

103 FIRE EMERGENCIES

103.1 OUTSIDE COMPACT AREA

Each State will maintain internal Cooperative Agreements dealing with agency fire assistance.

103.2 BETWEEN COMPACTS

The Southeastern States Compact Coordinator will coordinate with his or her counterpart in other compacts if assistance is being requested or if resources are being sent to a Southern Area Compact. Normal dispatch procedures will be followed in handling resources.

104 COMPACT INCIDENT REVIEW

104.1 PURPOSE

When significant mutual aid is requested and used, an Incident Review shall be made to determine efficiency and effectiveness of the Compact action.

104.2 TIME AND PLACE

The Compact Coordinator shall arrange for the Incident Review to meet at a convenient time and at a suitable location in the aided State.

104.3 REVIEW TEAM MAKE-UP

1. State Forester and Fire Chief of receiving State.
2. Fire chief of sending State or States.
3. Representative of U.S. Forest Service, Fire and Aviation in the receiving State.
4. Fire Chief and Staff from other Compact States, as desired.
5. Compact Coordinator.

Southern Area Interagency Mobilization Guide

Chapter 100 – Southeastern and South Central Compacts

104.4 SUPPORTING INFORMATION

Suppression personnel involved in the incident may be asked to participate in the Review. Any supporting material such as maps, time records, weather records, and critiques should be available for the Review.

104.5 INCIDENT REPORT

The Compact Coordinator shall prepare a written report of all findings including recommendations for future operations. This report will be sent to all member States and U.S. Forest Service, Fire and Aviation.

104.6 STANDARD DISPATCHES

Under the terms of a compact mobilization, the following will be considered “standard dispatches”:

- Tractor Strike Team
5 Tractor/Plows w/2 operators each and communications
1 Strike Team Leader w/vehicle and communications
- Engine Strike Teams
5 engines, any type, w/2 operators each and communications
1 Strike Team Leader w/vehicle and communications
- Personnel assigned on compact orders will receive a minimum of eight (8) hours of work time per day, with the receiving state reimbursing for the base 8 plus any overtime.

105 SHARED RESOURCES

105.1 RESOURCES

These resources are to be tracked by Federal and State Dispatchers.

105.1.1 Aviation

- Helicopter Buckets
- Airtankers

Southern Area Interagency Mobilization Guide

Chapter 100 – Southeastern and South Central Compacts

- Helicopters
- Air Transport
- Retardant Mixing Facilities - portable Long and Short Term
- Aerial Ignition Systems

105.1.2 PERSONNEL

- Hand Crews (20 person)
- Fire Behavior Analyst
- Air Attack Group Supervisors
- Dispatchers
- Communications Unit Leaders
- Air Operations Branch Director
- Air Support Group Supervisor

105.1.3 SPECIALIZED WATER HANDLING EQUIPMENT

- Portable Pumps
- Irrigation Pumps/Systems
- Large Volume Pumps

105.1.4 TRACTOR-PLOW UNITS

- High Flotation by size class

105.1.5 ALL TERRAIN VEHICLES

Southern Area Interagency Mobilization Guide

Chapter 100 – Southeastern and South Central Compacts

- Water Handling
- Non-water Handling

105.1.6 KITCHENS

105.1.7 MOBILE COMMAND POSTS

105.1.8 MAFFS

105.1.9 PORTABLE BRIDGES

106 INITIAL BRIEFING FOR STATE CREWS

The sending State will assure:

1. That all crews are qualified to fill job for which dispatched.
2. That crews come equipped with hard hats, gloves, fire shirts and pants, goggles, fire shelters and any other safety equipment needed for the job.

The Compact Coordinator will:

1. Ensure that receiving State brief out-of-State crews upon entering the State and that Compact policy is followed.

The receiving State will hold a briefing on:

1. Fire situation and expected behavior.
2. Assignment area
 - a. Terrain
 - b. Fuels
 - c. Supervision
3. Location of housing, feeding

Southern Area Interagency Mobilization Guide

Chapter 100 – Southeastern and South Central Compacts

4. Logistical support - fuel, grease, repair, etc.
5. Fire headquarters
6. Social customs
7. Local maps
8. Resource values at risk
9. Safety items
10. State laws, traffic, regulations, and restrictions
11. State policy
12. Other pertinent information

107 COMPACT ACTIVATION CHECKLIST

1. Determine need for resources.
2. Place resource order with Compact Coordinator (USFS) Atlanta, Georgia, for another State's resources.
3. Verbal and written notification of compact activation to the coordinator is preferred for record keeping.
4. Compact Coordinator will notify the appropriate Compact Chair.
5. Compact Coordinator will notify the adjoining Compact Chair.
6. Compact Coordinator will place resource orders with States stating "This is a Compact Order" (Normally following the closest resource concept).
7. Compact Coordinator will pass information on resources assigned to ordering State.
8. Demob will follow the normal demob process; release information, ETD's and ETA's on the same resource order form used in the mobilization.

Southern Area Interagency Mobilization Guide

Chapter 100 – Southeastern and South Central Compacts

9. The Compact Coordinator will update the Compact Chair, as needed, of the situation and actions taken.

10. Once the fire emergency has subsided and all compact resources have returned to their home State, the requesting State should notify the compact coordinator that the compact has been de-activated. Verbal and written notification is preferred.

Southern Area Interagency Mobilization Guide
Chapter 100 – Southeastern and South Central Compacts

APPENDIX A

INTERAGENCY SITUATION REPORT

NOT ATTACHED AT THIS TIME

Southern Area Interagency Mobilization Guide
Chapter 100 – Southeastern and South Central Compacts

APPENDIX B

RESOURCE ORDER FORM EXAMPLE

NOT ATTACHED AT THIS TIME

Southern Area Interagency Mobilization Guide

Chapter 100 – Southeastern and South Central Compacts

APPENDIX C

INITIAL BRIEFING FOR STATE CREWS

The sending State will assure:

1. That all crews are qualified to fill job for which dispatched.
2. That crews come equipped with hard hats, gloves, fire shirts and pants, goggles, fire shelters and any other safety equipment needed for the job.

The Compact Coordinator will:

1. Ensure that receiving State brief out of State crews upon entering the State and that Compact policy is followed.

The receiving State will hold a briefing on:

1. Fire situation and expected behavior.
2. Assignment area
 - a. Terrain
 - b. Fuels
 - c. Supervision
3. Location of housing, feeding
4. Logistical support – fuel, grease, repair, etc.
5. Fire headquarters
6. Social customs
7. Local maps
8. Resource values at risk

Southern Area Interagency Mobilization Guide

Chapter 100 – Southeastern and South Central Compacts

9. Safety items
10. State laws, traffic, regulations, and restrictions
11. State policy
12. Other pertinent information

Southern Area Interagency Mobilization Guide
Chapter 100 – Southeastern and South Central Compacts

APPENDIX D

COMPACT MAP

NOT ATTACHED AT THIS TIME

Southern Area Interagency Mobilization Guide

Chapter 100 – Southeastern and South Central Compacts

APPENDIX E

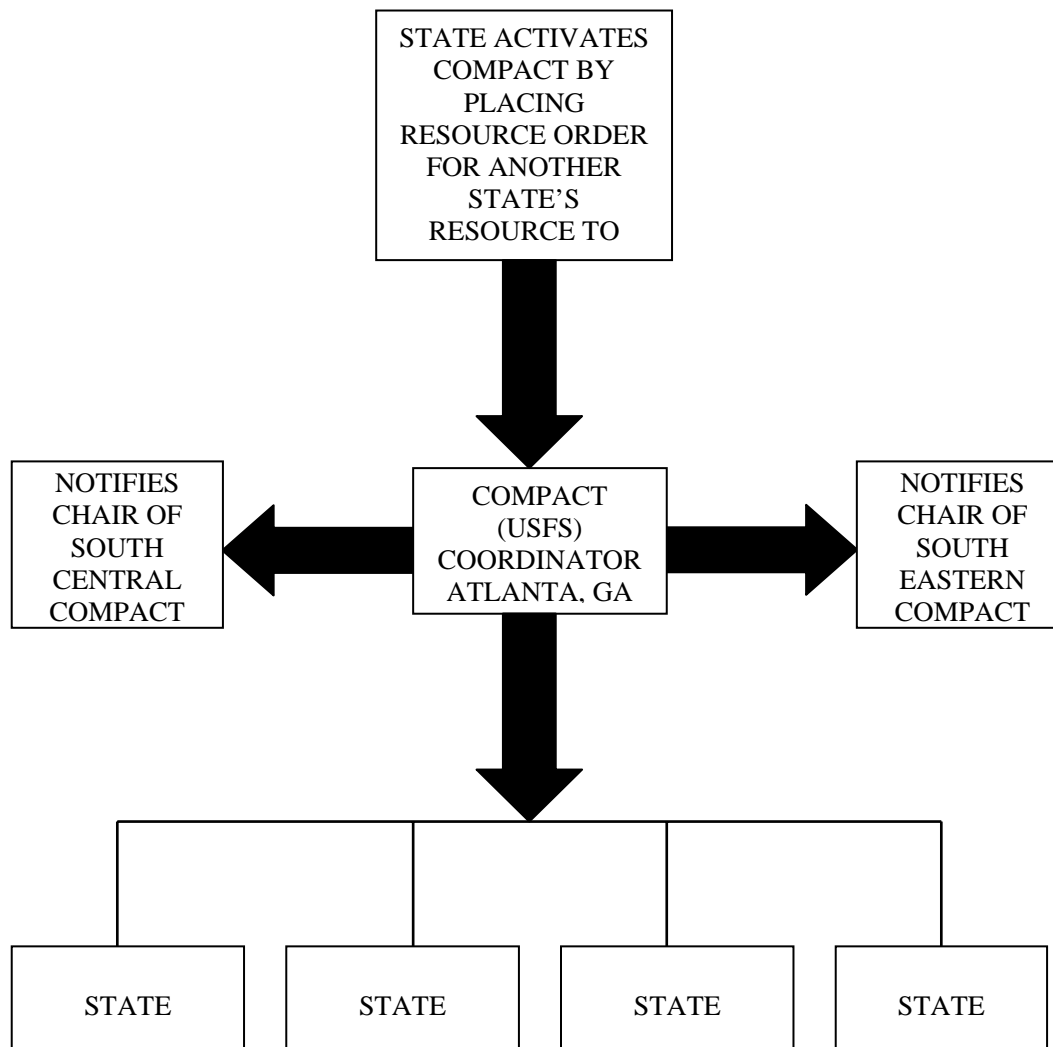
COMPACT ACTIVATION CHECKLIST

1. Determine need for resources.
2. Verbal and written notification of compact activation (to the compact by the requesting State) is coordinator preferred for record keeping. (678-320-3000; GEOGRAPHIC AREA COORDINATION)
3. Place resource orders with Compact Coordinator (USFS) Atlanta, Georgia, for another State's resources. (678-320-3020; COMPACT DESK)
4. Compact Coordinator will notify the appropriate Compact Chair.
5. Compact Coordinator will notify the adjoining Compact Chair.
6. Compact Coordinator will place resource orders with States stating "This is a Compact Order" (Normally following the closest resource concept).
7. Compact Coordinator will pass information on resources assigned to ordering State.
8. Demob will follow the normal demob process; release information, ETD's and ETA's on the same resource order form used in the mobilization.
9. The Compact Coordinator will update the Compact Chair, as needed, of the situation and actions taken.
10. Once the fire emergency has subsided and all compact resources have returned to their home State, the requesting State shall notify the compact coordinator that the compact has been de-activated. Both verbal and written notification is preferred.

Southern Area Interagency Mobilization Guide

Chapter 100 – Southeastern and South Central Compacts

APPENDIX F



THE COMPACT COORDINATOR WHEN PLACING THE RESOURCE ORDER WILL STATE "THIS IS A COMPACT ORDER".

UPON ACTIVATION OF A COMPACT, A COURTESY CALL WILL BE GIVEN TO THE ADJOINING COMPACT CHAIR.

THE COMPACT COORDINATOR WILL KEEP THE COMPACT CHAIR ADVISED TO THE SITUATION AND ACTIONS TAKEN

Southern Area Interagency Mobilization Guide
Chapter 100 – Southeastern and South Central Compacts

APPENDIX G

DIRECTORY

(See Chapter 50 of the Southern Area Mobilization Guide)

Southern Area Interagency Mobilization Guide
Chapter 100 – Southeastern and South Central Compacts

APPENDIX H
SHARED RESOURCES

To be sent to Compact Coordinator Annually by January 1 (see page 100-1)

EQUIPMENT

Type:	
Make:	
Special Equipment:	
Special Moving Requirements:	
Rate w/Operator:	
Wet (with fuel):	
Dry (receiving State supply fuel):	
Per diem rate for operator:	

AIRCRAFT

Type:	
Make:	
Model:	
Special Equipment:	
Passenger Capacity (exclude pilot):	
Load Capacity or Retardant Gallons:	
Rate w/Operator:	
Wet:	
Dry:	
Per diem rate for Pilot:	

PERSONNEL

Qualifications:	
Standard Rate of Pay:	
Overtime Rate:	
Per Diem Rate:	

Southern Area Interagency Mobilization Guide
Chapter 100 – Southeastern and South Central Compacts

APPENDIX H
ALABAMA FORESTRY COMMISSION

EQUIPMENT

Type:	Tractor/plow unit
Make:	John Deere
Model:	750 Standard + 7 Low Ground Pressure Units (LGP)
Special Equipment:	
Special Moving Requirements:	Truck transport required
Rate w/Operator:	\$100.00 per hour (minimum 3 hours per day)
Wet (with fuel):	
Dry (receiving State supply fuel):	
Per diem rate for operator:	\$75.00 per day

EQUIPMENT

Type:	Tractor/plow unit
Make:	John Deere
Model:	650 Standard + 7 Low Ground Pressure Units (LGP)
Special Equipment:	
Special Moving Requirements:	Truck transport required
Rate w/Operator:	\$80.00 per hour (minimum 3 hours per day)
Wet (with fuel):	
Dry (receiving State supply fuel):	N/A
Per diem rate for operator:	\$75.00 per day

EQUIPMENT

Type:	Tractor/plow unit
Make:	John Deere
Model:	550 Standard + 7 Low Ground Pressure Units (LGP)
Special Equipment:	
Special Moving Requirements:	Truck transport required
Rate w/Operator:	\$60.00 per hour
Wet (with fuel):	
Dry (receiving State supply fuel):	\$75.00 per day
Per diem rate for operator:	

APPENDIX H (CONTINUED)

Southern Area Interagency Mobilization Guide
Chapter 100 – Southeastern and South Central Compacts

ALABAMA FORESTRY COMMISSION

EQUIPMENT

Type:	Tractor/plow unit
Make:	John Deere
Model:	450 Standard + 7 Low Ground Pressure Units (LGP)
Special Equipment:	
Special Moving Requirements:	Truck transport required
Rate w/Operator:	
Wet (with fuel):	\$55.00 per hour(minimum 3 hours per day)
Dry (receiving State supply fuel):	N/A
Per diem rate for operator:	\$75.00 per day

EQUIPMENT

Type:	Truck Transport
Make:	
Model:	Type I (single rate)
Special Equipment:	
Special Moving Requirements:	
Rate w/Operator:	\$1.50/mile (minimum 50 miles per day)
Wet (with fuel):	
Dry (receiving State supply fuel):	
Per diem rate for operator:	\$75.00 per day

EQUIPMENT

Type:	Truck Transport
Make:	
Model:	Type II (tandem axle)
Special Equipment:	
Special Moving Requirements:	
Rate w/Operator:	
Wet (with fuel):	\$1.50 per mile (minimum 50 miles per day)
Dry (receiving State supply fuel):	N/A
Per diem rate for operator:	\$75.00 per day

Southern Area Interagency Mobilization Guide
Chapter 100 – Southeastern and South Central Compacts

APPENDIX H (CONTINUED)
ALABAMA FORESTRY COMMISSION

EQUIPMENT

Type:	Truck Transport
Make:	
Model:	Type III (Lowboy trailer)
Special Equipment:	
Special Moving Requirements:	
Rate w/Operator:	
Wet (with fuel):	\$1.50 per mile (minimum 50 miles per day)
Dry (receiving State supply fuel):	N/A
Per diem rate for operator:	\$75.00 per day

EQUIPMENT

Type:	Small Vehicles
Make:	Pick-up trucks and Sedans
Model:	1/2 ton and 3/4 ton
Special Equipment:	
Special Moving Requirements:	
Rate w/Operator:	.
Wet (with fuel):	\$0.50 per mile (minimum 50 miles per day)
Dry (receiving State supply fuel):	N/A
Per diem rate for operator:	\$75.00 per day

EQUIPMENT

Type:	Helicopter/bucket
Make:	Bambi
Model:	210 gallon (1 each)
Special Equipment:	
Special Moving Requirements:	
Rate w/Operator:	No Charge. Receiving state responsible for any needed repairs and/or replacement after use.
Wet (with fuel):	
Dry (receiving State supply fuel):	
Per diem rate for operator:	

Southern Area Interagency Mobilization Guide
Chapter 100 – Southeastern and South Central Compacts

APPENDIX H (CONTINUED)
ALABAMA FORESTRY COMMISSION

EQUIPMENT

Type:	Helicopter/bucket
Make:	Bambi
Model:	96 gallon (1 each)
Special Equipment:	
Special Moving Requirements:	
Rate w/Operator:	No Charge. Receiving state responsible for any needed repairs and/or replacement after use.
Wet (with fuel):	
Dry (receiving State supply fuel):	
Per diem rate for operator:	

EQUIPMENT

Type:	Helicopter/bucket
Make:	
Model:	760 gallon (3 each)
Special Equipment:	
Special Moving Requirements:	
Rate w/Operator:	No Charge. Receiving state responsible for any needed repairs and/or replacement after use.
Wet (with fuel):	
Dry (receiving State supply fuel):	
Per diem rate for operator:	

EQUIPMENT

Type:	Helicopter/bucket
Make:	
Model:	2,000 Gals (2 each)
Special Equipment:	
Special Moving Requirements:	
Rate w/Operator:	No Charge. Receiving state responsible for any needed repairs and/or replacement after use.
Wet (with fuel):	
Dry (receiving State supply fuel):	
Per diem rate for operator:	

Southern Area Interagency Mobilization Guide
Chapter 100 – Southeastern and South Central Compacts

APPENDIX H (CONTINUED)
ALABAMA FORESTRY COMMISSION

EQUIPMENT

Type:	Mobile Command Center
Make:	Normal
Model:	40 Foot Truck
Special Equipment:	Equipped with radios that are compatible with compact frequencies.
Special Moving Requirements:	Self contained truck w/ generator trailer
Rate w/Operator:	Truck – \$500.00 per day Generator – \$50.00 per day
Wet (with fuel):	\$1.50 per mile
Dry (receiving State supply fuel):	N/A
Per diem rate for operator:	\$75.00 per day

AIRCRAFT

Type:	Fixed wing detection aircraft
Make:	Cessna
Model:	180 & 182
Special Equipment:	All equipped with LORAN
Passenger Capacity (exclude pilot):	3
Load Capacity or Retardant Gallons:	None
Rate Flight Hour with Pilot:	
Wet:	\$86.00 per hour
Dry:	N/A
Per diem rate for Pilot:	\$75.00 per day

PERSONNEL

Qualification:	Twenty-person crew (1 available). Each member has completed at least S-130, S190 Standards for Survival and I-200. Each member has passed Arduous level Pack Test.
Standard Rate of Pay:	Varies with individual
Overtime Rate:	Varies with individual
Per Diem Rate:	\$75.00 per day

Southern Area Interagency Mobilization Guide
Chapter 100 – Southeastern and South Central Compacts

APPENDIX H (CONTINUED)
ARKANSAS FORESTRY COMMISSION

AIRCRAFT

Type:	Fixed wing air attack/passenger aircraft
Make:	Aero Commander
Model:	AC-500-B
Special Equipment:	GPS/Programmable Technisonic
Passenger Capacity (exclude pilot):	5
Load Capacity or Retardant Gallons:	N/A
Rate Flight Hour with Pilot:	\$200/hr plus salary and expenses Receiving state supply fuel
Wet:	
Dry:	
Per diem rate for Pilot:	Actual expenses

AIRCRAFT

Type:	Fixed wing detection
Make:	Cessna
Model:	182
Special Equipment:	GPS/Programmable Technisonic
Passenger Capacity (exclude pilot):	3
Load Capacity or Retardant Gallons:	N/A
Rate Flight Hour with Pilot:	\$65/hr plus salary and expenses Receiving state supply fuel
Wet:	
Dry:	
Per diem rate for Pilot:	Actual expenses

PERSONNEL

Qualification:	Variable
Standard Rate of Pay:	Actual hourly rate plus fringe
Overtime Rate:	1.5 hourly over 40
Per Diem Rate:	Actual expenses

APPENDIX H (CONTINUED)

Southern Area Interagency Mobilization Guide
Chapter 100 – Southeastern and South Central Compacts

ARKANSAS FORESTRY COMMISSION

EQUIPMENT

Type:	Tractors with plows and winches
Make:	JD 650/CAT D5
Model:	
Special Equipment:	Some units w/articulating V-Blades
Special Moving Requirements:	Transport required
Rate w/Operator:	\$60/HR plus salary and expenses Receiving state supply fuel
Wet (with fuel):	
Dry (receiving State supply fuel):	
Per diem rate for operator:	

EQUIPMENT

Type:	Tractors with plows
Make:	JD 450/550/CAT D3/D4
Model:	
Special Equipment:	
Special Moving Requirements:	Transport required (see transportation cost)
Rate w/Operator:	\$50/HR plus salary and expenses Receiving state supply fuel
Wet (with fuel):	
Dry (receiving State supply fuel):	
Per diem rate for operator:	

EQUIPMENT

Type:	Transport, Tandem axle
Make:	Variable
Model:	
Special Equipment:	
Special Moving Requirements:	
Rate w/Operator:	\$1.50/mile plus salary and expenses Receiving state supply fuel
Wet (with fuel):	
Dry (receiving State supply fuel):	
Per diem rate for operator:	

Southern Area Interagency Mobilization Guide
Chapter 100 – Southeastern and South Central Compacts

APPENDIX H (CONTINUED)
ARKANSAS FORESTRY COMMISSION

EQUIPMENT

Type:	Pickup Truck - 1/2 ton
Make:	Variable
Model:	
Special Equipment:	
Special Moving Requirements:	
Rate w/Operator:	\$0.45/mile plus salary and expenses Receiving state supply fuel
Wet (with fuel):	
Dry (receiving State supply fuel):	
Per diem rate for operator:	

Southern Area Interagency Mobilization Guide
Chapter 100 – Southeastern and South Central Compacts

APPENDIX H (CONTINUED)
FLORIDA DIVISION OF FORESTRY

EQUIPMENT

Type:	Heavy Tractor/Plow Unit (2 operators)
Make:	John Deere
Model:	D-7/JD850
Special Equipment:	Truck Transport Required
Special Moving Requirements:	None
Rate w/Operators (2):	\$157 Per Hour
Wet (with fuel):	
With Truck Transport:	\$52 Per Hour
Dry (receiving State supply fuel):	N/A
Per diem rate for operator:	\$36 X 2 Operators plus lodging

EQUIPMENT

Type:	Medium Heavy Tractor/Plow Unit (2 operators)
Make:	John Deere
Model:	D-5H/D-6/JD750
Special Equipment:	Truck Transport Required
Special Moving Requirements:	None
Rate w/Operators (2):	\$142 Per Hour
Wet (with fuel):	
With Truck Transport:	\$52 Per Hour
Dry (receiving State supply fuel):	N/A
Per diem rate for operator:	\$36 X 2 Operators plus lodging

Southern Area Interagency Mobilization Guide
Chapter 100 – Southeastern and South Central Compacts

APPENDIX H (CONTINUED)
FLORIDA DIVISION OF FORESTRY

EQUIPMENT

Type:	Medium Tractor/Plow Unit (2 operators)
Make:	John Deere
Model:	D-4/D-5C/JD550/JD650
Special Equipment:	Truck Transport Required
Special Moving Requirements:	None
Rate w/Operators (2):	\$126 Per Hour
Wet (with fuel):	
With Truck Transport:	\$52 Per Hour
Dry (receiving State supply fuel):	N/A
Per diem rate for operator:	\$36 X 2 Operators plus lodging

EQUIPMENT

Type:	Light Tractor/Plow Unit (2 operators)
Make:	John Deere
Model:	JD350/JD450
Special Equipment:	Truck Transport Required
Special Moving Requirements:	None
Rate w/Operators (2):	\$111 Per Hour
Wet (with fuel):	
With Truck Transport:	\$52 Per Hour
Dry (receiving State supply fuel):	N/A
Per diem rate for operator:	\$36 X 2 Operators plus lodging

Southern Area Interagency Mobilization Guide
Chapter 100 – Southeastern and South Central Compacts

APPENDIX H (CONTINUED)
FLORIDA DIVISION OF FORESTRY

EQUIPMENT

Type:	Wildland Engine (2 operators)
Make:	Varies
Model:	Type 3
Special Equipment:	Foam Proportioned/aux. motor/pump
Special Moving Requirements:	None
Rate w/Operators (2):	\$94 Per Hour
Wet (with fuel):	
Dry (receiving State supply fuel):	N/A
Per diem rate for operator:	\$36 X 2 Operators plus lodging

EQUIPMENT

Type:	Wildland Engine (2 operators)
Make:	Varies
Model:	Type 6
Special Equipment:	Foam Proportioned/aux. motor/pump
Special Moving Requirements:	None
Rate w/Operators (2):	\$87 Per Hour
Wet (with fuel):	
Dry (receiving State supply fuel):	N/A
Per diem rate for operator:	\$36 X 2 Operators plus lodging
Type:	Command Trailer/Communications Unit (1 operator)
Make:	
Model:	Type 2 30' - Tow behind trailer with 2- 7/16" ball hitch
Special Equipment:	Auxiliary Power - Generator Set
Special Moving Requirements:	Heavy Duty Vehicle required for towing
Rate w/Operator (1):	\$814.00 Per Day (Operator on 12 hr shift)
Wet (with fuel):	
Dry (receiving State supply fuel):	N/A
Per diem rate for operator:	\$36 plus lodging

Southern Area Interagency Mobilization Guide
Chapter 100 – Southeastern and South Central Compacts

APPENDIX H (CONTINUED)
FLORIDA DIVISION OF FORESTRY

EQUIPMENT

Type:	Command Trailer/Communications Unit (1 operator)
Make:	Type 1
Model:	52' - Tow behind road tractor
Special Equipment:	Auxiliary Power - Generator Set
Special Moving Requirements:	Road Tractor Vehicle required for towing
Rate w/Operator (1):	\$1,064.00 Per Day (Operator on 12 hr shift)
Wet (with fuel):	
Dry (receiving State supply fuel):	N/A
Per diem rate for operator:	\$36 plus lodging

EQUIPMENT

Type:	Mower (2 operators)
Make:	
Model:	Gyro-Trac
Special Equipment:	
Special Moving Requirements:	Heavy Duty Vehicle required for towing
Rate w/Operators (2):	\$174 Per Hour
Wet (with fuel):	Tow Vehicle \$18/Hour + \$0.45/Mile
Dry (receiving State supply fuel):	N/A
Per diem rate for operator:	\$36 plus lodging

EQUIPMENT

Type:	Mower (2 operators)
Make:	
Model:	Posi-Trac
Special Equipment:	
Special Moving Requirements:	Heavy Duty Vehicle required for towing
Rate w/Operators (2):	\$124 Per Hour
Wet (with fuel):	Tow Vehicle \$18/Hour + \$0.45/Mile
Dry (receiving State supply fuel):	N/A
Per diem rate for operator:	\$36 X 2 Operators plus lodging

Southern Area Interagency Mobilization Guide
Chapter 100 – Southeastern and South Central Compacts

APPENDIX H (CONTINUED)
FLORIDA DIVISION OF FORESTRY

TABLE OF RATES

RESOURCE	Type I	Type II	Type III	Type IV
ENGINE, WILDLAND			\$50/hr \$1.50/mi	\$43/hr \$1.15/mi
DOZER	\$113/hr	\$98/hr	\$82/hr	\$67/hr
FIXED WING AIRCRAFT	\$550/hr*	\$200/hr*	\$100/hr*	
HELICOPTER		\$900/hr plus fuel cost*	\$350/hr plus fuel cost*	
HELICOPTER TENDER			\$52/hr \$2.15/mi*	
TRANSPORT-HEAVY EQUIPMENT	\$52/hr or \$2.15/mi	\$52/hr or \$2.15/mile	\$52/hr or \$2.15/mile	
TRANSPORT UTILITY CARGO Stake Body 2WD/4WD		\$33/hr or \$1.00/mile	\$33/hr or \$1.00/mile	\$13/hr or \$0.75/mile
WATER TENDER Includes truck/tractor and trailer	\$52/hr and \$2.15/mile	\$52/hr and \$2.15/mile	\$31/hr and \$1.10/mi	

*Fixed wing and rotary wing aircraft will be subject to a minimum charge of twice the hourly rate per day when committed for more than the first operational period.

Southern Area Interagency Mobilization Guide
Chapter 100 – Southeastern and South Central Compacts

APPENDIX H (CONTINUED)
FLORIDA DIVISION OF FORESTRY

GENERAL EQUIPMENT

EQUIPMENT	RATES
AIR BOAT – All Types	\$53/hr
ATV 4 WHEEL (Honda Type)	\$11/hr
TRACK CARRIERS Bombardier, Soft Track, Personnel Carrier, Rollagon, Prehauler, M-548	\$110/hr
COMMAND TRAILER	\$550/day/Type 2 \$800/day/Type 1
DRUM CHOPPER	\$110/day
EXCAVATOR TRACKED	\$124/hr
FORK LIFT to 6,000 lbs	\$10/hr
FORK LIFT to 12,000 lbs	\$13/hr

Southern Area Interagency Mobilization Guide
Chapter 100 – Southeastern and South Central Compacts

APPENDIX H (CONTINUED)
FLORIDA DIVISION OF FORESTRY

GENERAL EQUIPMENT

FORK LIFT to 18,000 lbs	\$20/hr
FORK LIFT to 50,000 lbs	\$35/hr
FUEL TRAILER, DRY	\$100/day
GENERATOR 20 KW OR LESS	\$60/day
GENERATORS GREATER THAN 20 KW	\$120/day
GENERAL PURPOSE TENTS	\$50/day
GROUND SUPPORT TRAILER W/OFFICE	\$330/day
INFRARED IMAGER	\$100/day
LABOR: SUPERVISORY	\$30/hr
NON-SUPERVISORY	\$22/hr
LOADER WHEELED - ALL	\$93/hr
LOGISTICS TRAILER	\$200/day
MOBILE CACHE TRAILER	\$100/day
MOWER- GYRO-TRACK	\$130/hr
MOWER- POSI-TRACK	\$80/hr
PERSONNEL TRANSPORTATION	\$15.50/hr
Pickups/Sedans/SUV	\$0.45/mi
PORTABLE LAVATORY	\$195 /day
	\$18/hr
PORTABLE PUMPS – All Types	\$130/day
REFRIGERATED TRAILER	\$275/day
REPEATER, ALPHA REPEATER AND TOWER, PORTABLE TOWER WITH GENERATOR & ANTENNAE	\$50/day
TERRA TORCH W/FUEL	\$150/hr
TERRA TORCH DRY	\$100/day
TRACTOR WHEELED (ALL TYPES)	\$52/hr
VAN, PASSENGER – 15 passenger	\$15.50/hr
	\$0.45/mi
WATER TRAILER-400 GALLON Potable or Non-potable (Water Buffalo Type)	\$55/day

Southern Area Interagency Mobilization Guide
Chapter 100 – Southeastern and South Central Compacts

APPENDIX H (CONTINUED)
FLORIDA DIVISION OF FORESTRY
GENERAL EQUIPMENT

WATER TRAILER-5000+GALLON Potable or Non-potable	\$225/day
WATER TRAILER <u>TRACKED</u> -2500 GALLON	\$235/day

AIRCRAFT

Type:	Helicopter Type 2 (1 Pilot)
Make:	Bell
Model:	UH1 (Super Huey), 209
Special Equipment:	Bambi Bucket
Passenger Capacity (exclude pilot):	None
Load Capacity or Retardant Gallons:	300 Gallon
Rate Flight Hour with Pilot (1):	\$922 (plus fuel cost)
Helicopter Support Equipment (Mechanic and Truck):	\$82 Per Hour
Wet:	
Dry:	N/A
Per diem rate for Pilots (1):	\$36 plus lodging

AIRCRAFT

Type:	Helicopter Type 3 (1 Pilot)
Make:	Bell
Model:	OH-58
Special Equipment:	Bambi Bucket
Passenger Capacity (exclude pilot):	None
Load Capacity or Retardant Gallons:	100 Gallon
Rate Flight Hour with Pilot (1):	\$372 (plus fuel cost)
Helicopter Support Equipment (Mechanic and Truck):	\$82 Per Hour
Wet:	
Dry:	N/A
Per diem rate for Pilot (1):	\$36 plus lodging

Southern Area Interagency Mobilization Guide
Chapter 100 – Southeastern and South Central Compacts

APPENDIX H (CONTINUED)
FLORIDA DIVISION OF FORESTRY

AIRCRAFT

Type:	Patrol Aircraft (1 pilot)
Make:	Piper
Model:	Archer II
Special Equipment:	GPS/Air Attack Communications
Passenger Capacity (exclude pilot):	3
Load Capacity or Retardant Gallons:	N/A
Rate Flight Hour with Pilot (1):	\$122 (plus fuel cost)
Wet:	
Dry:	N/A
Per diem rate for Pilot:	\$36 plus lodging

AIRCRAFT

Type:	Light Twin (2 pilots)
Make:	Piper
Model:	Navajo
Special Equipment:	GPS/Air Attack Communications
Passenger Capacity (exclude pilot):	4
Load Capacity or Retardant Gallons:	N/A
Rate Flight Hour with Pilots (2):	\$244 (plus fuel cost)
Wet:	
Dry:	N/A
Per diem rate for Pilots (2):	\$36 X 2 Pilots plus lodging

PERSONNEL

Qualification:	(4) ICS Team Type 1
Standard Rate of Pay:	Rate is determined by number of personnel assigned x hourly rate per shift.
Vehicles Optional:	See Table of Rates
Per Diem Rate:	\$36 (meals) plus lodging

Southern Area Interagency Mobilization Guide
Chapter 100 – Southeastern and South Central Compacts

APPENDIX H (CONTINUED)
GEORGIA FORESTRY COMMISSION

EQUIPMENT

Type:	Passenger Transportation
Make:	Sedan (full size); Sedan,(compact); Station wagon; pickup (compact), Van (5-9 passenger)
Special Equipment:	
Special Moving Requirements:	
Rate w/Operator: Wet (with fuel):	\$.48 per mile
Dry (receiving state supplied fuel) Per diem rate for Operator	Lesser of: Actual cost or Federal per diem rate for locality

EQUIPMENT

Type:	Passenger Transportation
Make:	Pickup (4800-5900 GVWR); Van (15 passenger)
Special Equipment:	Pickup w/ water-not utilized as engine
Special Moving Requirements:	
Rate w/Operator: Wet (with fuel):	\$.55 per mile
Dry (receiving state supplied fuel) Per diem rate for Operator	Lesser of: Actual cost or Federal per diem rate for locality

EQUIPMENT

Type:	Transport
Make:	Various double axle drive on bed
Special Equipment:	
Special Moving Requirements:	
Rate w/Operator: Wet (with fuel):	\$.1.62 per mile
Dry (receiving state supplied fuel) Per diem rate for Operator	Lesser of: Actual cost or Federal per diem rate for locality

Southern Area Interagency Mobilization Guide
Chapter 100 – Southeastern and South Central Compacts

APPENDIX H (CONTINUED)
GEORGIA FORESTRY COMMISSION

EQUIPMENT

Type:	Truck Tractor
Make:	Various (25000 4x2)
Special Equipment:	
Special Moving Requirements:	
Rate w/Operator: Wet (with fuel):	Add personnel (Firefighter) \$1.97 per mile
Dry (receiving state supplied fuel) Per diem rate for Operator	Lesser of: Actual cost or Federal per diem rate for locality

EQUIPMENT

Type:	Engine
Make:	Type VII; Type VI (4x4)
Special Equipment:	150 -300 gallon tank/pump unit
Special Moving Requirements:	Engine Crew – ENGB + ENOP
Rate w/Operator: Wet (with fuel):	Add personnel (Firefighter) \$50 per day + \$.50 per mile
Dry (receiving state supplied fuel) Per diem rate for Operator	Lesser of: Actual cost or Federal per diem rate for locality

EQUIPMENT

Type:	Engine
Make:	Type IV; Type III
Special Equipment:	
Special Moving Requirements:	Engine Crew – ENGB + ENOP
Rate w/Operator: Wet (with fuel):	Add personnel (Firefighter) \$75 per day + \$.75 per mile
Dry (receiving state supplied fuel) Per diem rate for Operator	Lesser of: Actual cost or Federal per diem rate for locality

Southern Area Interagency Mobilization Guide
Chapter 100 – Southeastern and South Central Compacts

APPENDIX H (CONTINUED)
GEORGIA FORESTRY COMMISSION

EQUIPMENT

Type:	ATV
Make:	Various
Special Equipment:	w/ water tank and/or burn unit
Special Moving Requirements:	Trailer
Rate w/Operator: Wet (with fuel):	Add personnel (Firefighter) \$10 per day + transport charges
Dry (receiving state supplied fuel) Per diem rate for Operator	Lesser of: Actual cost or Federal per diem rate for locality

EQUIPMENT

Type:	Tractor Plow
Make:	Type VI (JD 350 – JD 400)
Special Equipment:	
Special Moving Requirements:	Transport required + operator
Rate w/Operator: Wet (with fuel):	Add personnel (Firefighter) \$55. per hour + transport charges
Dry (receiving state supplied fuel) Per diem rate for Operator	Lesser of: Actual cost or Federal per diem rate for locality

EQUIPMENT

Type:	Tractor Plow
Make:	Type V (JD 450, D4C, TD-8)
Special Equipment:	
Special Moving Requirements:	Transport required + operator
Rate w/Operator: Wet (with fuel):	Add personnel (Firefighter) \$60. per hour + transport charges
Dry (receiving state supplied fuel) Per diem rate for Operator	Lesser of: Actual cost or Federal per diem rate for locality

Southern Area Interagency Mobilization Guide
Chapter 100 – Southeastern and South Central Compacts

APPENDIX H (CONTINUED)
GEORGIA FORESTRY COMMISSION

EQUIPMENT

Type:	Tractor Plow
Make:	Type IV (JD 650, D4, TD-9)
Special Equipment:	
Special Moving Requirements:	Transport Required + operator
Rate w/Operator: Wet (with fuel):	Add personnel (Firefighter) \$65. per hour + transport charges
Dry (receiving state supplied fuel) Per diem rate for Operator	Lesser of: Actual cost or Federal per diem rate for locality

EQUIPMENT

Type:	Tractor Plow
Make:	Type III (D5H, D4H, Case 1150)
Special Equipment:	
Special Moving Requirements:	Transport Required + operator
Rate w/Operator: Wet (with fuel):	Add personnel (Firefighter) \$75. per hour + transport charges
Dry (receiving state supplied fuel) Per diem rate for Operator	Lesser of: Actual cost or Federal per diem rate for locality

EQUIPMENT

Type:	Tractor Plow
Make:	Type II (JD 750, JD 700, TD-15)
Special Equipment:	
Special Moving Requirements:	Transport Required + operator
Rate w/Operator: Wet (with fuel):	Add personnel (Firefighter) \$90. per hour + transport charges
Dry (receiving state supplied fuel) Per diem rate for Operator	Lesser of: Actual cost or Federal per diem rate for locality

Southern Area Interagency Mobilization Guide
Chapter 100 – Southeastern and South Central Compacts

APPENDIX H (CONTINUED)
GEORGIA FORESTRY COMMISSION

AIRCRAFT

Type:	Helicopter
Make:	Type II UH1H
Special Equipment:	
Passenger Capacity (excluding Pilot):	10
Load Capacity or Retardant Gallons:	235 Gallons
Rate w/Pilot: Wet (with fuel): Dry (receiving state supplied fuel) Per diem rate for Pilot	\$1,000. per hour Actual fuel cost Lesser of: Actual cost or Federal per diem rate for locality
Special Requirements (mechanic to accompany, etc.)	2 hr per day minimum charge

AIRCRAFT

Type:	Helicopter
Make:	Type III Bell 407
Special Equipment:	
Passenger Capacity (excluding Pilot):	6
Load Capacity or Retardant Gallons:	210 Gallons
Rate w/Pilot: Wet (with fuel): Dry (receiving state supplied fuel) Per diem rate for Pilot	\$600. per hour Actual fuel cost Lesser of: Actual cost or Federal per diem rate for locality
Special Requirements (mechanic to accompany, etc.)	2 hr per day minimum charge

Southern Area Interagency Mobilization Guide
Chapter 100 – Southeastern and South Central Compacts

APPENDIX H (CONTINUED)
GEORGIA FORESTRY COMMISSION

AIRCRAFT

Type:	Airplane
Make:	Cessna 182
Special Equipment:	
Passenger Capacity (excluding Pilot):	3
Load Capacity or Retardant Gallons:	
Rate w/Pilot: Wet (with fuel): Dry (receiving state supplied fuel) Per diem rate for Pilot Special Requirements (mechanic to accompany, etc.)	\$120. per hour Actual fuel cost Lesser of: Actual cost or Federal per diem rate for locality 2 hr per day minimum charge

AIRCRAFT

Type:	Maintenance Truck
Make:	Ford F -350
Special Equipment:	600 gallon fuel trailer
Passenger Capacity (excluding Pilot):	N/A
Load Capacity or Retardant Gallons:	N/A
Rate w/Pilot: Wet (with fuel): Dry (receiving state supplied fuel) Per diem rate for Pilot Special Requirements (mechanic to accompany, etc.)	\$280 per day + \$1.50 per mile Lesser of: Actual cost or Federal per diem rate for locality Actual cost of mechanic (see: Personnel (Support))

Southern Area Interagency Mobilization Guide
Chapter 100 – Southeastern and South Central Compacts

APPENDIX H (CONTINUED)
GEORGIA FORESTRY COMMISSION

EQUIPMENT

Type:	Water Handling equipment
Make:	6" pump
Special Equipment:	
Special Moving Requirements:	
Rate:	\$100. per day + \$14.50 hr
Wet (with fuel):	
Dry (receiving state supplied fuel)	
Per diem rate for Operator	N/A

EQUIPMENT

Type:	Water Handling Equipment
Make:	Mark III Pump
Special Equipment:	
Special Moving Requirements:	
Rate	\$25. per day + \$5.00 per hour
Wet (with fuel):	
Dry (receiving state supplied fuel)	
Per diem rate for Operator	N/A

PERSONNEL (Overhead)

Qualifications:	Qualified ICS positions
Standard Pay Rate:	Personnel salary rate
Overtime Rate:	1 ½ time over 40 hours per week
Per Diem Rate	Lesser of: Actual cost or Federal per diem rate for locality
Special Considerations	

PERSONNEL (Support)

Qualifications:	Transportation drivers, Mechanics, non ICS positions
Standard Pay Rate:	Personnel salary rate
Overtime Rate:	1 ½ time over 40 hours per week
Per Diem Rate	Lesser of: Actual cost or Federal per diem rate for locality
Special Considerations	

Southern Area Interagency Mobilization Guide
Chapter 100 – Southeastern and South Central Compacts

APPENDIX H (CONTINUED)
GEORGIA FORESTRY COMMISSION

PERSONNEL (Firefighter)

Qualifications:	Dozer operator, Engine Crew, Handcrew (20 person plus leader)
Standard Pay Rate:	Personnel salary rate
Overtime Rate:	1 ½ time over 40 hours per week
Per Diem Rate	Lesser of: Actual cost or Federal per diem rate for locality
Special Considerations	

Southern Area Interagency Mobilization Guide
Chapter 100 – Southeastern and South Central Compacts

APPENDIX H (CONTINUED)
KENTUCKY DIVISION OF FORESTRY

EQUIPMENT

Type:	Helicopter Bucket
Make:	Bambi 250 gallon (3 ea) 660 gallon (7 ea)
Special Equipment:	Foam Sack
Special Moving Requirements:	Receiving state pays shipping costs
Rate w/Operator: Wet: (with fuel): Dry: (receiving State Supply fuel) Per Diem Rate for operator:	No charge. Receiving state responsible for any needed repairs and/or replacement after use.

EQUIPMENT

Type:	Light tractor/plow unit or dozer
Make:	JD-400/JD-450
Special Equipment:	Rear lift plow
Special Moving Requirements:	Truck transport required (not included in rate)
Rate w/Operator: Wet: Dry: Per Diem Rate for operator:	\$50/hr (Wet or Dry) + transport + salary of personnel Transport (Wet or Dry) \$1.50/mile \$30.00/day + actual lodging costs

EQUIPMENT

Type:	Type VI Engine – 75
Make:	Various
Special Equipment:	4x4 with Foam
Special Moving Requirements:	
Rate w/Operator: Wet: Dry: Per Diem Rate for operator:	\$30/hr + vehicle costs + salary of personnel Vehicle costs (wet or dry) \$0.60/mile \$30/day + actual lodging costs

Southern Area Interagency Mobilization Guide
Chapter 100 – Southeastern and South Central Compacts

APPENDIX H (CONTINUED)
KENTUCKY DIVISION OF FORESTRY

EQUIPMENT

Type:	Mobile Helicopter Bucket Repair Shop
Make:	Modified Communications Hut
Special Equipment:	Self-contained machine shop with spare helicopter bucket parts for repairs. Also has radio and cell phone communications
Special Moving Requirements:	Truck transport required
Rate w/Operator:	\$125/day + transport + salary (2-person crew)
Wet: (with fuel):	Truck transport \$1.50/mile
Dry: (receiving State Supply fuel)	
Per Diem Rate for operator:	\$30.00/day + actual lodging cost

EQUIPMENT

Type:	Pickups
Make:	Various
Special Equipment:	4x4
Special Moving Requirements:	
Rate w/Operator:	\$0.50/mile + salary of personnel
Per Diem Rate for operator:	\$30.00/day + actual cost of lodging

PERSONNEL

Type:	Various Individual Overhead
Standard Rate of Pay:	Varies with individual
Overtime Rate:	Time and one-half over 40 hours
Per Diem Rate:	\$30/day + actual lodging costs

PERSONNEL

Type:	Twenty person crew/engine operators/tractor-plow operators, etc.
Standard Rate of Pay:	Varies with individual
Overtime Rate:	Time and one-half over 40 hrs
Per Diem Rate:	\$30/day + actual lodging costs

Southern Area Interagency Mobilization Guide
Chapter 100 – Southeastern and South Central Compacts

APPENDIX H (CONTINUED)
LOUISIANA OFFICE OF FORESTRY

EQUIPMENT

Type:	Passenger Vehicles
Make:	Sedan; Pickup Truck; Sport Utility Vehicle; Van
Special Equipment:	
Special Moving Requirements:	
Rate w/Operator:	\$.45 per mile plus actual operator salary and benefits plus 1.5 x salary over 40 hours/week and expenses.
Wet (with fuel):	Dry
Dry (receiving state supplying fuel)	
Per diem rate for Operator	Actual Expenses

EQUIPMENT

Type:	Transport Diesel (Tandem Axle)
Make:	International 4900; Mack GU813
Special Equipment:	Two way programmable radio, hand tools
Special Moving Requirements:	
Rate w/Operator:	\$2.00 per mile plus actual operator salary and benefits plus 1.5 x salary for over 40 hours/week and expenses.
Wet (with fuel):	Dry
Dry (receiving state supplying fuel)	
Per diem rate for Operator	Actual Expenses

Southern Area Interagency Mobilization Guide
Chapter 100 – Southeastern and South Central Compacts

APPENDIX H (CONTINUED)
LOUISIANA OFFICE OF FORESTRY

EQUIPMENT

Type:	Tractor Plow Unit
Make:	John Deere 750 LPG (environmental cab)
Special Equipment:	Hurricane V-blade or tilt blade with six-way movement/rear winch/and fesco lift plow
Special Moving Requirements:	Truck Tractor Trailer – “Wide Load”
Rate w/Operator:	Actual Cost of the two main unit’s salary & benefits plus 1.5 x salary for over 40 hours/week plus .25 x hourly pay when hazardous.
Wet (with fuel):	Crawler \$90/hour plus
Dry (receiving state supplying fuel)	Truck Tractor Trailer Required @ \$2.25/mile.
Per diem rate for Operator	Dry Actual Expenses (Five hour per day minimum charge)

EQUIPMENT

Type:	Tractor Plow Unit
Make:	John Deere 650J or John Deere 450G
Special Equipment:	Lift Type Plow with V-blade or straight blade with six-way movement (winch available upon request) Two-way programmable radio
Special Moving Requirements:	International 4900; Mack GU814 transport required
Rate w/Operator:	Actual cost of the two man unit’s salary & benefits plus 1.5 x salary for over 40 hours/week plus .25 x hourly pay when hazardous.
Wet (with fuel):	Crawler \$70/hour
Dry (receiving state supplying fuel)	Transport required @ \$2.00 mile
Per diem rate for Operator	Dry Actual expenses (Five hour per day minimum charge)

Southern Area Interagency Mobilization Guide
Chapter 100 – Southeastern and South Central Compacts

APPENDIX H (CONTINUED)
LOUISIANA OFFICE OF FORESTRY

EQUIPMENT

Type:	Type V or VI Engines
Make:	GMC 5500 or Ford F-350
Special Equipment:	400 gal. tank or 200 gal. tank Two way programmable radio
Special Moving Requirements:	None
Rate w/Operator:	\$40.00/hour and \$.55/mile plus, actual cost of two or three man unit's salary & benefits plus 1.5 x salary for over 40 hours/week plus .25 x hourly pay when hazardous.
Wet (with fuel):	
Dry (receiving state supplying fuel)	Dry
Per diem rate for Operator	Actual expense

EQUIPMENT

Type:	Refrigerated Trailer
Make:	Various
Special Equipment:	
Special Moving Requirements:	Semi Truck
Rate w/Operator:	\$275/day
Wet (with fuel):	
Dry (receiving state supplying fuel)	Dry
Per diem rate for Operator	Actual expense

Southern Area Interagency Mobilization Guide
Chapter 100 – Southeastern and South Central Compacts

APPENDIX H (CONTINUED)
LOUISIANA OFFICE OF FORESTRY

AIRCRAFT

Type:	Detection Aircraft
Make:	Cessna 182T – 2003 Model
Special Equipment:	Two way programmable radio, dual GPS
Passenger Capacity (excluding Pilot):	3
Load Capacity or Retardant Gallons:	N/A
Rate w/Pilot: Wet (with fuel): Dry (receiving state supplying fuel) Per diem rate for Pilot Special Requirements (mechanic to accompany, etc.)	\$110/hour plus pilot's salary & benefits plus 1.5 x salary for over 40 hours/week. Actual Expense Two hour per day minimum charge

PERSONNEL

Qualifications:	20 Person Crew (NWCG qualified and pack tested).
Standard Pay Rate:	Actual cost of employee's salary & benefits plus 1.5 x salary for over 40 hours/week plus .25 x hourly pay when hazardous.
Overtime Rate:	1.5 x employee salary over 40 hours/week
Per Diem Rate	Actual Expense
Special Considerations	

Southern Area Interagency Mobilization Guide
Chapter 100 – Southeastern and South Central Compacts

APPENDIX H (CONTINUED)
MISSISSIPPI FORESTRY COMMISSION

EQUIPMENT

Type:	DOZER, TYPE II
Make:	CAT., D5N LGP
Special Equipment:	BLADE & WINCH
Special Moving Requirements:	OTR - TRACTOR/LOWBOY
Rate w/Operator: Tractor/Lowboy	\$90/hr + Operator Salary \$5/mi (includes Lowboy)
Wet (with fuel): Dry (receiving state supplying fuel	Either Way
Per diem rate for Operator	Prevailing Rates

EQUIPMENT

Type:	TRACTOR/PLOW, TYPE IV
Make:	CAT D5G LGP
Special Equipment:	BLADE/PLOW
Special Moving Requirements:	TANDEM TRANSPORT
Rate w/Operator: Transport	\$70/hr + Operator Salary \$3.50/mi
Wet (with fuel): Dry (receiving state supplying fuel	Either Way
Per diem rate for Operator	Prevailing Rates

Southern Area Interagency Mobilization Guide
Chapter 100 – Southeastern and South Central Compacts

APPENDIX H (CONTINUED)
MISSISSIPPI FORESTRY COMMISSION

EQUIPMENT

Type:	TRACTOR/PLOW, TYPE V
Make:	JD450G & H, LGP
Special Equipment:	BLADE/PLOW
Special Moving Requirements:	TANDEM TRANSPORT
Rate w/Operator: Transport	\$60/hr + Salary off two-man crew \$3.50/mi
Wet (with fuel): Dry (receiving state supplying fuel	Either Way
Per diem rate for Operator	Prevailing Rates

EQUIPMENT

Type:	ENGINE, TYPE 6
Make:	Ford F350
Special Equipment:	150 gal SLIP-ON Unit
Special Moving Requirements:	
Rate: OTR Transportation:	\$45/hr + Salary of two-man crew \$1.00/mi
Wet (with fuel): Dry (receiving state supplying fuel	Either Way
Per diem rate for Operator	Prevailing Rates

EQUIPMENT

Type:	WATER BUCKET (2) 1,700 gal
Make:	BAMBI (adjustable capacity)
Special Equipment:	
Special Moving Requirements:	CAN BE PICKED UP or WILL DELIVER
Rate w/Operator:	Refurbishment Costs
Wet (with fuel): Dry (receiving state supplying fuel	
Per diem rate for Operator	

Southern Area Interagency Mobilization Guide
Chapter 100 – Southeastern and South Central Compacts

APPENDIX H (CONTINUED)
NORTH CAROLINA DIVISION OF FOREST RESOURCES

EQUIPMENT

Type:	Passenger Vehicles														
Make:	Various														
Special Equipment:	N/A														
Special Moving Requirements:	N/A														
Wet (with fuel)*:	<table style="width: 100%; border-collapse: collapse;"> <tr> <td style="width: 60%;">Sedan:</td> <td style="text-align: right;">\$0.33/mile</td> </tr> <tr> <td>Pick Up Truck:</td> <td style="text-align: right;">\$0.40/mile</td> </tr> <tr> <td>Passenger Van (mini):</td> <td style="text-align: right;">\$0.33/mile</td> </tr> <tr> <td>Radio Engineers Van:</td> <td style="text-align: right;">\$0.70/mile</td> </tr> <tr> <td>Suburban (4x4):</td> <td style="text-align: right;">\$0.45/mile</td> </tr> <tr> <td>Mechanics Truck:</td> <td style="text-align: right;">\$0.65/mile</td> </tr> <tr> <td colspan="2">Operator(s) and their per diem not included in equipment rate. See Personnel for operator rate.</td> </tr> </table>	Sedan:	\$0.33/mile	Pick Up Truck:	\$0.40/mile	Passenger Van (mini):	\$0.33/mile	Radio Engineers Van:	\$0.70/mile	Suburban (4x4):	\$0.45/mile	Mechanics Truck:	\$0.65/mile	Operator(s) and their per diem not included in equipment rate. See Personnel for operator rate.	
Sedan:	\$0.33/mile														
Pick Up Truck:	\$0.40/mile														
Passenger Van (mini):	\$0.33/mile														
Radio Engineers Van:	\$0.70/mile														
Suburban (4x4):	\$0.45/mile														
Mechanics Truck:	\$0.65/mile														
Operator(s) and their per diem not included in equipment rate. See Personnel for operator rate.															
<p>*Passenger vehicles will be charged the greater of the following:</p> <ol style="list-style-type: none"> 1. Actual mileage used. 2. Daily availability rate (equal to 100 miles). 															

EQUIPMENT

Type:	Engines				
Make:	Various				
Special Equipment:	N/A				
Special Moving Requirements:	N/A				
Wet (with fuel)*:	<table style="width: 100%; border-collapse: collapse;"> <tr> <td style="width: 60%;">Type 6 or 7:</td> <td style="text-align: right;">\$0.80/mile</td> </tr> <tr> <td colspan="2">Operator(s) and their per diem not included in equipment rate. See Personnel for operator rate.</td> </tr> </table>	Type 6 or 7:	\$0.80/mile	Operator(s) and their per diem not included in equipment rate. See Personnel for operator rate.	
Type 6 or 7:	\$0.80/mile				
Operator(s) and their per diem not included in equipment rate. See Personnel for operator rate.					
<p>*Engines will be charged the greater of the following:</p> <ol style="list-style-type: none"> 1. Actual mileage used. 2. Daily availability rate (equal to 100 miles). 					

Southern Area Interagency Mobilization Guide
Chapter 100 – Southeastern and South Central Compacts

APPENDIX H (CONTINUED)
NORTH CAROLINA DIVISION OF FOREST RESOURCES

EQUIPMENT

Type:	Trucks	
Make:	Various	
Special Equipment:	N/A	
Special Moving Requirements:	N/A	
Wet (with fuel)*:	Bridge Truck:	\$0.75/mile
	Dump Truck:	\$2.16/mile
	Wrecker:	\$2.16/mile
	Stake Body Truck:	\$0.75/mile
	Fuel Truck (Aviation or Ground):	\$2.33/mile
	Aviation Support Unit (Truck & Trailer):	\$2.84/mile
Operator(s) and their per diem not included in equipment rate. See Personnel for operator rate.		
*Trucks will be charged the greater of the following: 1. Actual mileage used. 2. Daily availability rate (equal to 100 miles).		

EQUIPMENT

Type:	Water Tenders	
Make:	Various	
Special Equipment:	N/A	
Special Moving Requirements:	N/A	
Wet (with fuel)*:	Type 1, 2, or 3	\$2.33/mile
	Operator(s) and their per diem not included in equipment rate. See Personnel for operator rate.	
*Water Tenders will be charged the greater of the following: 1. Actual mileage used. 2. Daily availability rate (equal to 100 miles).		

Southern Area Interagency Mobilization Guide
Chapter 100 – Southeastern and South Central Compacts

APPENDIX H (CONTINUED)
NORTH CAROLINA DIVISION OF FOREST RESOURCES

EQUIPMENT

Type:	Hauling Units
Make:	Various
Special Equipment:	N/A
Special Moving Requirements:	N/A
Wet (with fuel)*:	Truck Tractor & Trailer \$2.84/mile
	Operator(s) and their per diem not included in equipment rate. See Personnel for operator rate.
*Hauling Units will be charged the greater of the following: 1. Actual mileage used. 2. Daily availability rate (equal to 100 miles).	

EQUIPMENT

Type:	Wheeled Tractors
Make:	Various
Special Equipment:	N/A
Special Moving Requirements:	N/A
Wet (with fuel)*:	All Sizes \$20.29/hour
	Operator(s) and their per diem not included in equipment rate. See Personnel for operator rate.
*Wheeled Tractors will be charged the greater of the following: 1. Actual hours used. 2. Daily availability rate (equal to 6 hours).	

EQUIPMENT

Type:	Tractor Plow Units						
Make:	Various						
Special Equipment:	N/A						
Special Moving Requirements:	Requires Hauling Unit for road transport.						
Wet (with fuel)*:	Type 1	Type 2	Type 3	Type 4	Type 5	Type 6	Nodwell/ Flextrack
	\$90.70/ hour	\$77.92/ hour	\$68.51/ hour	\$48.75/ hour	\$41.27/ hour	\$36.29/ hour	\$66.38/ hour
	Operator(s) and their per diem not included in equipment rate. See Personnel for operator rate.						
*Tractor Plow Units will be charged the greater of the following: 1. Actual hours used. 2. Daily availability rate (equal to 6 hours).							

Southern Area Interagency Mobilization Guide
Chapter 100 – Southeastern and South Central Compacts

APPENDIX H (CONTINUED)
NORTH CAROLINA DIVISION OF FOREST RESOURCES

EQUIPMENT

Type:	Dozers		
Make:	Various		
Special Equipment:	N/A		
Special Moving Requirements:	Requires Hauling Unit for road transport.		
Wet (with fuel)*:	Type 1	Type 2	Type 3
	\$87.32/hour	\$73.53/hour	\$64.12/hour
	Operator(s) and their per diem not included in equipment rate. See Personnel for operator rate.		
*Tractor Plow Units will be charged the greater of the following:			
1. Actual hours used.			
2. Daily availability rate (equal to 6 hours).			

EQUIPMENT

Type:	Other Track Units		
Make:	Various		
Special Equipment:	N/A		
Special Moving Requirements:	Requires Hauling Unit for road transport.		
Wet (with fuel)*:	Full Track	\$48.46/hour	
	Operator(s) and their per diem not included in equipment rate. See Personnel for operator rate.		
*Other Track Units will be charged the greater of the following:			
1. Actual hours used.			
2. Daily availability rate (equal to 6 hours).			

EQUIPMENT

Type:	Portable Pumps		
Make:	Various		
Special Equipment:	Hose and appliances included.		
Special Moving Requirements:	Requires Vehicle to transport unit(s) to site.		
Wet (with fuel)*:	1" to 4" Diameter Discharge	\$8.00/hour	
	Operator(s) and their per diem not included in equipment rate. See Personnel for operator rate.		
*Portable Pumps will be charged the greater of the following:			
1. Actual hours used.			
2. Daily availability rate (equal to 6 hours).			

Southern Area Interagency Mobilization Guide
Chapter 100 – Southeastern and South Central Compacts

APPENDIX H (CONTINUED)
NORTH CAROLINA DIVISION OF FOREST RESOURCES

EQUIPMENT

Type:	Self Contained Pumps
Make:	Various
Special Equipment:	Includes irrigation system.
Special Moving Requirements:	Requires Vehicle to transport unit(s) to site.
Wet (with fuel)*:	6" Discharge \$20.31/hour
	Volume Lift (self contained) \$42.94/hour
	Operator(s) and their per diem not included in equipment rate. See Personnel for operator rate.
*Self Contained Pumps will be charged the greater of the following: 1. Actual hours used. 2. Daily availability rate (equal to 6 hours).	

EQUIPMENT

Type:	Volume Lift Pumps
Make:	Various
Special Equipment:	N/A
Special Moving Requirements:	Requires Vehicle to transport unit(s) to site.
Wet (with fuel)*:	All Sizes \$3.82/hour
	Operator(s) and their per diem not included in equipment rate. See Personnel for operator rate.
*Self Contained Pumps will be charged the greater of the following: 3. Actual hours used. 4. Daily availability rate (equal to 6 hours).	

EQUIPMENT

Type:	Motor Graders
Make:	Various
Special Equipment:	N/A
Special Moving Requirements:	Requires Hauling Unit for road transport.
Wet (with fuel)*:	All Sizes \$20.29/hour
	Operator(s) and their per diem not included in equipment rate. See Personnel for operator rate.
*Motor Graders will be charged the greater of the following: 1. Actual hours used. 2. Daily availability rate (equal to 6 hours).	

Southern Area Interagency Mobilization Guide
Chapter 100 – Southeastern and South Central Compacts

APPENDIX H (CONTINUED)
NORTH CAROLINA DIVISION OF FOREST RESOURCES

EQUIPMENT

Type:	All-Terrain Forklifts
Make:	Various
Special Equipment:	N/A
Special Moving Requirements:	Requires Hauling Unit for road transport.
Wet (with fuel)*:	All Sizes \$13.16/hour
	Operator(s) and their per diem not included in equipment rate. See Personnel for operator rate.
*Trucks will be charged the greater of the following: 1. Actual hours used. 2. Daily availability rate (equal to 6 hours).	

EQUIPMENT

Type:	Portable Bridges
Make:	Various
Special Equipment:	N/A
Special Moving Requirements:	Requires Truck Tractor for road transport.
Daily Rate*:	All Sizes \$103.00/day
*Rate in addition to truck tractor mileage.	

EQUIPMENT

Type:	Generators
Make:	Various
Special Equipment:	N/A
Special Moving Requirements:	Requires Vehicle to transport unit(s) to site.
Wet (with fuel)*:	25KW and below \$ 7.18/hour
	26KW and above \$11.93/hour
*Generators will be charged the greater of the following: 1. Actual hours used. 2. Daily availability rate (equal to 6 hours).	

EQUIPMENT

Type:	Incident Support Trailers
Make:	Various
Special Equipment:	N/A
Special Moving Requirements:	Requires Vehicle to transport unit(s) to site.
Daily Rate*:	All Sizes \$206.00/day
*Rate in addition to transport mileage.	

Southern Area Interagency Mobilization Guide
Chapter 100 – Southeastern and South Central Compacts

APPENDIX H (CONTINUED)
NORTH CAROLINA DIVISION OF FOREST RESOURCES

EQUIPMENT

Type:	Miscellaneous Equipment
Make:	Various
Special Equipment:	N/A
Special Moving Requirements:	May require Vehicle or Hauling Unit Transport to site
Wet (with fuel)*:	Portable Air Compressor \$ 3.41/hour
	Boats (All Sizes) \$29.75/hour
	ATV (All Sizes) \$ 9.54/hour
*Miscellaneous Equipment will be charged the greater of the following: 1. Actual hours used. 2. Daily availability rate (equal to 6 hours).	

SUPPLIES

Type:	Foam and Retardant
Make:	Various
Special Equipment:	N/A
Special Moving Requirements:	May require Vehicle or Hauling Unit Transport to site
Rate*:	Foam \$ 5.00/Gallon
	Retardant \$ 1.25/Gallon
*Rate in addition to transport cost. Aircraft will be charged the following: 1. Daily availability rate. 2. Actual hours used.	

AIRCRAFT

Type:	Tanker (Type 3)
Make:	Canadair CL-215
Special Equipment:	Aviation Support Unit
Passenger Capacity (excluding Pilot):	N/A
Load Capacity or Retardant Gallons:	1,440 Gallons
Wet (with fuel)*:	\$5,400/Daily Availability Rate 2,945/Flight hour
	Pilot(s), crewmember(s), mechanic(s), or support equipment (if applicable) and their per diem not included in equipment rate. See Personnel for pilot, mechanic, and crewmember rate. See Truck for Aviation Support Unit rate.
Aircraft will be charged the greater of the following: 3. Actual hours used. 4. Daily availability rate (equal to 2 hours).	

Southern Area Interagency Mobilization Guide
Chapter 100 – Southeastern and South Central Compacts

APPENDIX H (CONTINUED)
NORTH CAROLINA DIVISION OF FOREST RESOURCES

AIRCRAFT

Type:	Single Engine Air Tankers (SEATs)
Make:	M-18 Dromader
Special Equipment:	N/A
Passenger Capacity (excluding Pilot):	None
Load Capacity or Retardant Gallons:	500 Gallons
Wet (with fuel)*:	\$615.00/hour
	Pilot(s), crewmember(s), mechanic(s), or support equipment (if applicable) and their per diem not included in equipment rate. See Personnel for pilot, mechanic, and crewmember rate.
Aircraft will be charged the greater of the following:	
1. Actual hours used.	
2. Daily availability rate (equal to 2 hours).	

AIRCRAFT

Type:	Fixed Wing Aircraft														
Make:	Various (See Below)														
Special Equipment:	N/A														
Passenger Capacity (excluding Pilot):	Varies														
Load Capacity or Retardant Gallons:	N/A														
Wet (with fuel)*:	<table style="width: 100%; border-collapse: collapse;"> <tr> <td style="width: 70%;">Beech T-34</td> <td style="text-align: right;">\$226.00/hour</td> </tr> <tr> <td>Cessna 182 Skylane</td> <td style="text-align: right;">\$205.00/hour</td> </tr> <tr> <td>Cessna 185 Skywagon</td> <td style="text-align: right;">\$191.00/hour</td> </tr> <tr> <td>Cessna L-19 Bird Dog</td> <td style="text-align: right;">\$142.00/hour</td> </tr> <tr> <td>DeHavilland DHC-2 Beaver</td> <td style="text-align: right;">\$226.00/hour</td> </tr> <tr> <td>Piper PA-18 Super Cub</td> <td style="text-align: right;">\$127.00/hour</td> </tr> <tr> <td>Piper PA-31 Navajo</td> <td style="text-align: right;">\$325.00/hour</td> </tr> </table>	Beech T-34	\$226.00/hour	Cessna 182 Skylane	\$205.00/hour	Cessna 185 Skywagon	\$191.00/hour	Cessna L-19 Bird Dog	\$142.00/hour	DeHavilland DHC-2 Beaver	\$226.00/hour	Piper PA-18 Super Cub	\$127.00/hour	Piper PA-31 Navajo	\$325.00/hour
Beech T-34	\$226.00/hour														
Cessna 182 Skylane	\$205.00/hour														
Cessna 185 Skywagon	\$191.00/hour														
Cessna L-19 Bird Dog	\$142.00/hour														
DeHavilland DHC-2 Beaver	\$226.00/hour														
Piper PA-18 Super Cub	\$127.00/hour														
Piper PA-31 Navajo	\$325.00/hour														
	Pilot(s), crewmember(s), mechanic(s), or support equipment (if applicable) and their per diem not included in equipment rate. See Personnel for pilot, mechanic, and crewmember rate.														
Aircraft will be charged the greater of the following:															
1. Actual hours used.															
2. Daily availability rate (equal to 2 hours).															

Southern Area Interagency Mobilization Guide
Chapter 100 – Southeastern and South Central Compacts

APPENDIX H (CONTINUED)
NORTH CAROLINA DIVISION OF FOREST RESOURCES

AIRCRAFT

Type:	Helicopters (Type 3)
Make:	Various (See Below)
Special Equipment:	Bambi Bucket, Aerial Ignition Device Machine
Passenger Capacity (excluding Pilot):	4 to 8
Load Capacity or Retardant Gallons:	240 Gallons
Wet (with fuel)*:	Bell UH-1H \$1,375.00
	Eurocopter AS350-B3 \$ 580.00
	Pilot(s), crewmember(s), mechanic(s), or support equipment (if applicable) and their per diem not included in equipment rate. See Personnel for pilot, mechanic, and crewmember rate.
Aircraft will be charged the greater of the following:	
1. Actual hours used.	
2. Daily availability rate (equal to 2 hours).	

PERSONNEL

Qualifications:	Three (3) Type 2 (Compact Type 1) Incident Management Teams (Wildfire & All-Hazard). Three (3) Type 2 IA handcrews. Additional Type 3 Incident Management Teams, handcrews and specialist/overhead available.
Standard Pay Rate:	Salary and Benefits – Varies by individual.
Overtime Rate:	1.5 x Base pay for hours worked over 40-hour workweek.
Per Diem Rate	Support provided by host agency or current North Carolina out of state per diem rate will apply.
Special Considerations	None

Southern Area Interagency Mobilization Guide
Chapter 100 – Southeastern and South Central Compacts

APPENDIX H (CONTINUED)
OKLAHOMA FORESTRY SERVICES

EQUIPMENT

Type:	Hauling Units
Make:	Various
Special Equipment:	N/A
Special Moving Requirements:	N/A
Wet (with fuel)*:	Truck Tractor & Trailer \$2.76/mile Operator(s) and their per diem not included in equipment rate. See Personnel for operator rate.
*Hauling Units will be charged the greater of the following: 3. Actual mileage used. 4. Daily availability rate (equal to 100 miles).	

EQUIPMENT

Type:	Pickup, 4X4
Make:	Various
Special Equipment:	N/A
Special Moving Requirements:	N/A
Wet (with fuel)*:	\$40/hour Operator(s) and their per diem not included in equipment rate. See Personnel for operator rate.

EQUIPMENT

Type:	Light Dozer (29)
Make:	JD 450 G,H, J Model
Special Equipment:	
Special Moving Requirements:	Truck Transport Required
Rate w/Operator:	Actual cost of Salary & Benefits plus 1.5 x salary for over 40 hrs.
Wet: (with fuel):	\$80/hour (guaranteed 3-hour minimum day plus transport @ \$40/hour guaranteed 3-hour minimum day + \$1.50/mile costs
Dry: (receiving State Supply fuel)	N/A
Per Diem Rate for operator:	Federal Rates Apply

Southern Area Interagency Mobilization Guide
Chapter 100 – Southeastern and South Central Compacts

APPENDIX H (Continued)
OKLAHOMA FORESTRY SERVICES

EQUIPMENT

Type:	Light Dozer (5)
Make:	JD 650 H & J Model
Special Equipment:	
Special Moving Requirements:	5T Tractor/Trailer - Wide Load Required
Rate w/Operator:	Actual cost of Salary & Benefits plus 1.5 x salary for over 40 hrs.
Wet: (with fuel):	\$100/hour plus transport guaranteed 3-hr minimum/day @ \$50/hour minus guaranteed 3-hr minimum/day + \$2.50/mile
Dry: (receiving State Supply fuel)	N/A
Per Diem Rate for operator:	Federal Rates Apply

EQUIPMENT

Type:	Medium Dozers (3)
Make:	JD - 750 C
Special Equipment:	
Special Moving Requirements:	5T Tractor/Trailer - Wide Load Required
Rate w/Operator:	Actual cost of Salary & Benefits plus 1.5 x salary for over 40 hrs.
Wet: (with fuel):	\$125/hour plus transport @ \$50/hour + \$2.50/mile All guaranteed 3-hr/day minimum
Dry: (receiving State Supply fuel)	N/A
Per Diem Rate for operator:	Federal Rates Apply

Southern Area Interagency Mobilization Guide
Chapter 100 – Southeastern and South Central Compacts

APPENDIX H (Continued)
OKLAHOMA FORESTRY SERVICES

EQUIPMENT

Type:	46,000-52,000 lb GVW Transport (42)
Make:	Various
Special Equipment:	Tilt & Roll Back Beds or Flat Beds with hydraulic ramps
Special Moving Requirements:	
Rate with Operator:	
Operator Costs:	Actual cost of Salary & Benefits plus 1.5 x salary for over 40 hrs.
Wet: (with fuel):	\$40/hour (guarantee 3 hours min./day + \$1.50/mile)
Dry: (receiving State Supply fuel)	N/A
Per Diem Rate for operator:	Federal Rates Apply

EQUIPMENT

Type:	Type 6 Engine (30)
Make:	Various
Special Equipment:	4x4 with Foam
Special Moving Requirements:	
Rate with Operator:	
Operator Costs:	Actual cost of Salary & Benefits plus 1.5 x salary for over 40 hrs.
Wet: (with fuel):	\$60/hour (8 hour/day guarantee min)
Dry: (receiving State Supply fuel)	N/A
Per Diem Rate for operator:	Federal Rates Apply

Southern Area Interagency Mobilization Guide
Chapter 100 – Southeastern and South Central Compacts

APPENDIX H (Continued)
OKLAHOMA FORESTRY SERVICES

EQUIPMENT

Type:	Helicopter buckets
Make:	Bambi
Special Equipment:	600 Gal. Capacity (4) 1320 Gal. Capacity (3)
Special Moving Requirements:	In custody of National Guard - Minimum two day delay to ship
Rate w/o Operator:	\$50/day plus Shipping + Repairs
Wet: (with fuel): Dry: (receiving State Supply fuel) Per Diem Rate for operator:	

PERSONNEL

Qualifications	Single Resource Bosses (35)
Standard Rate of Pay:	Salary & Benefits - Varies by Individual
Overtime Rate:	1.5 x Base pay for hours worked over 40/wk
Per Diem Rate:	Federal Rates Apply

PERSONNEL

Qualifications	Strike Team Leaders/Task Force Leaders (10)
Standard Rate of Pay:	Salary & Benefits - Varies by Individual
Overtime Rate:	1.5 x Base pay for hours worked over 40/wk
Per Diem Rate:	Federal Rates Apply

PERSONNEL

Qualifications	Division Group Sups (3)
Standard Rate of Pay:	Salary & Benefits - Varies by Individual
Overtime Rate:	1.5 x Base pay for hours worked over 40/wk
Per Diem Rate:	Federal Rates Apply

PERSONNEL

Qualifications	Type 2 Ops Chief (1)
Standard Rate of Pay:	Salary & Benefits - Negotiated
Overtime Rate:	1.5 x Base pay for hours worked over 40/wk
Per Diem Rate:	Federal Rates Apply

Southern Area Interagency Mobilization Guide
Chapter 100 – Southeastern and South Central Compacts

APPENDIX H (Continued)
OKLAHOMA FORESTRY SERVICES

PERSONNEL

Qualifications	ICT4 (42)
Standard Rate of Pay:	Salary & Benefits – Varies by Individual
Overtime Rate:	1.5 x Base pay for hours worked over 40/wk
Per Diem Rate:	Federal Rates Apply

PERSONNEL

Qualifications	Type 1 Ops Chief (1)
Standard Rate of Pay:	Salary & Benefits - Negotiated
Overtime Rate:	1.5 x Base pay for hours worked over 40/wk
Per Diem Rate:	Federal Rates Apply

Southern Area Interagency Mobilization Guide
Chapter 100 – Southeastern and South Central Compacts

APPENDIX H (Continued)
SOUTH CAROLINA FORESTRY COMMISSION

EQUIPMENT

Type:	Type 6 Engine (5) ¾ ton 4x4
Make:	
Special Equipment:	
Special Moving Requirements:	
Rate w/o Operator:	\$50.00 per day and \$0.75 per mile wet
Wet: (with fuel):	
Dry: (receiving State supply fuel)	
Per Diem Rate for operator:	Actual Expenses/Operator's Salary

EQUIPMENT

Type:	Mechanic Truck (3) 1 ½ ton
Make:	
Special Equipment:	Tools, Crane, Welder, Air Compressor
Special Equipment:	
Rate w/o Operator:	\$50.00 per day and \$0.75 per mile
Wet: (with fuel):	
Per Diem Rate for operator:	Actual Expenses/Operator's Salary

EQUIPMENT

Type:	Helicopter Buckets (2 ea)
Make:	Bambi
Special Equipment:	780 Gallon Capacity
Special Moving Requirements:	
Rate w/o Operator:	TBD
Wet: (with fuel):	
Dry: (receiving State supply fuel)	

Southern Area Interagency Mobilization Guide
Chapter 100 – Southeastern and South Central Compacts

APPENDIX H (Continued)
SOUTH CAROLINA FORESTRY COMMISSION

EQUIPMENT

Type:	ATV-4 Wheeler
Make:	
Special Equipment:	
Special Moving Requirements:	
Rate w/o Operator:	\$7.50 per hour minimum 2 hours per day
Wet: (with fuel):	
Per Diem Rate for operator:	actual expenses/operators salary

EQUIPMENT

Type:	Water Handling Equipment Trailer ¼ Ton
Make:	
Special Equipment:	Hose: 1,000', Drop Tank 3,000 gallons drop tank, Mark III Pumps, Float Pumps, 6-person Mop-up Kit, assorted nozzles and fittings
Special Moving Requirements:	
Rate w/o Operator:	\$50.00 per day and replacement cost of lost equipment
Per Diem Rate for operator:	Operator: Actual Expenses/Salary

EQUIPMENT

Type:	Pickup 4x4 (15) 3/4 ton
Make:	3/4 Ton
Special Equipment:	
Special Moving Requirements:	
Rate w/o Operator:	\$50.00/day and \$0.75 per mile
Wet: (with fuel):	
Dry: (receiving State supply fuel)	
Per Diem Rate for operator:	Operator: Actual Expenses/Salary

Southern Area Interagency Mobilization Guide
Chapter 100 – Southeastern and South Central Compacts

APPENDIX H (Continued)
SOUTH CAROLINA FORESTRY COMMISSION

EQUIPMENT

Type:	Tractor Plow Units
Make:	Dresta TD-9, D-5 CAT, JD 450, 550, 750, Dresta TD-8, JD 700
Special Equipment:	Standard and LGP, Blades & Winches
Special Moving Requirements:	w/Transports
Rate w/o Operator:	JD 450: \$65/hr; JD 550: \$65/hr; TD-8: \$65/hr, and standard and LGP, blades, winches
Wet: (with fuel):	TD-9: \$85/hr, D-5: \$85/hr - JD 700 \$85/hr Transport10 Wheeler: \$50/day + \$2.00 per mile Transport Lowboy: \$50/Day + \$2.50 per mile
Per Diem Rate for operator:	All equipment minimum 2-hours per day Operator: Actual Expenses/Salary

EQUIPMENT

Type:	Passenger Mini and 12-15 passenger vans
Make:	
Special Equipment:	
Special Moving Requirements:	
Rate w/o Operator:	Mini Van - \$13/per day + \$.17/mile 12-15 passenger van \$18/day + \$.21/mile Sedan \$17/Day + \$.16/mile
Wet: (with fuel):	
Per Diem Rate for operator:	Actual expenses + operators salary

AIRCRAFT

ype:	Fixed Wing
Make:	Cessna
Model:	172, 182, 180, 185
Special Equipment:	
Passenger Capacity (exclude pilot):	
Load Capacity or Retardant Gallons:	
Rate w/o Operator:	172 (\$95.00 per hour); 180, 182 (\$110.00 per hour); 185 (\$120.00 per hour) wet.
Wet:	
Per Diem Rate for Pilot:	Pilot: Actual Expenses/Salary

Southern Area Interagency Mobilization Guide
Chapter 100 – Southeastern and South Central Compacts

APPENDIX H (Continued)
SOUTH CAROLINA FORESTRY COMMISSION

AIRCRAFT

Type:	Fixed Wing
Make:	
Model:	T41-B
Special Equipment:	
Passenger Capacity (exclude pilot):	
Load Capacity or Retardant Gallons:	
Rate w/o Operator:	\$95 per hour wet
Wet:	
Per Diem Rate for Pilot:	Pilot: Actual Expenses/Salary

PERSONNEL

Qualifications	Single Resource - All Positions
Standard Rate of Pay:	Base Salary
Overtime Rate:	Time and a half over 8 hours per day.
Per Diem Rate:	Actual Expenses

Southern Area Interagency Mobilization Guide
Chapter 100 – Southeastern and South Central Compacts

APPENDIX H (CONTINUED)
TENNESSEE DIVISION OF FORESTRY

EQUIPMENT

Type:	Tractor/plow unit – medium (Type 5)
Make:	D3GXL- 70 HP, D4GXL – 80 HP
Special Equipment:	6 way blade, rear lift plow, enclosed cab, blade mounted winch
Special Moving Requirements:	Use Fuelman fuel purchase system.
Rate: Per diem rate for operator:	\$50.00/hr Wet or Dry (4 hr./day minimum) (add apprx. \$20.00/hr for each operator) Transport mileage rate- \$1.80/mi Use Fuelman fuel purchase system CONUS + M&I

EQUIPMENT

Type:	Tractor/plow unit – medium (Type 5)
Make:	D4GLGP – 80 HP
Special Equipment:	6 way blade, rear lift plow, enclosed cab, blade mounted winch
Special Moving Requirements:	Use Fuelman fuel purchase system.
Rate: Per diem rate for operator:	\$50.00/hr Wet or Dry (4 hr./day minimum) (add apprx. \$20.00/hr for each operator) Transport mileage rate- \$1.80/mi Use Fuelman fuel purchase system CONUS + M&I

Southern Area Interagency Mobilization Guide
Chapter 100 – Southeastern and South Central Compacts

APPENDIX H (Continued)
TENNESSEE DIVISION OF FORESTRY

EQUIPMENT

Type:	Light engines (Type 6)
Make:	Mallory
Special Equipment:	150 gallon water/foam
Special Moving Requirements:	Use Fuelman to purchase fuel
Rate:	\$35.00/hr (4 hr./day minimum) (add appr. \$20.00/hr for each operator) \$0.56/mile (wet or dry)
Per diem rate for operator:	CONUS + M&I

PERSONNEL

Qualifications:	20 person crew Type IIa
Standard Rate of Pay:	Base salary + benefits
Overtime Rate:	1 ½ after 37.5 hrs. per week
Per Diem Rate:	CONUS + M & I

PERSONNEL

Qualifications:	Single resource overhead positions i.e. CRWB, DOZB, STLC, STLE, STLD
Standard Rate of Pay:	Base salary + benefits
Overtime Rate:	1 ½ after 37.5 hrs. per week
Per Diem Rate:	CONUS + M & I

Southern Area Interagency Mobilization Guide
Chapter 100 – Southeastern and South Central Compacts

APPENDIX H (Continued)
TEXAS FOREST SERVICE

EQUIPMENT (OVERHEAD VEHICLES)

Type:	Sedan
Make:	Assorted
Model:	1996 - 2002
Special Equipment:	
Special Moving Requirements:	
Rate w/Operator:	
Wet: (with fuel):	\$.40 / mile
Dry: (receiving State Supply fuel)	
Per Diem Rate for operator:	See "Personnel (Overhead)"

EQUIPMENT (OVERHEAD VEHICLES)

Type:	Sport Utility Vehicle (2 WD or 4 WD)
Make:	Assorted
Model:	1996 - 2002
Special Equipment:	
Special Moving Requirements:	
Rate w/Operator:	
Wet: (with fuel):	\$.50 / mile
Dry: (receiving State Supply fuel)	
Per Diem Rate for operator:	See "Personnel (Overhead)"

EQUIPMENT (FIREFIGHTING)

Type:	Pickup, ½ - ¾ ton (2 WD or 4 WD)
Make:	Assorted
Model:	1996 - 2002
Special Equipment:	
Special Moving Requirements:	
Rate w/Operator:	
Wet: (with fuel):	\$.65 / mile
Dry: (receiving State Supply fuel)	
Per Diem Rate for operator:	See "Personnel (Overhead)"

Southern Area Interagency Mobilization Guide
Chapter 100 – Southeastern and South Central Compacts

APPENDIX H (Continued)
TEXAS FOREST SERVICE

EQUIPMENT (FIREFIGHTING)

Type:	Pickup, 1 ton (2 WD or 4 WD)
Make:	Assorted
Model:	1996 - 2002
Special Equipment:	
Special Moving Requirements:	
Rate w/Operator:	
Wet: (with fuel):	\$.75 / mile
Dry: (receiving State Supply fuel)	
Per Diem Rate for operator:	See "Personnel (Overhead)"

EQUIPMENT (FIREFIGHTING)

Type:	10 – 15 Passenger Van
Make:	Assorted
Model:	1996 - 2002
Special Equipment:	
Special Moving Requirements:	
Rate w/Operator:	
Wet: (with fuel):	\$.80 / mile
Dry: (receiving State Supply fuel)	
Per Diem Rate for operator:	See "Personnel (Overhead)"

EQUIPMENT (FIREFIGHTING)

Type:	Dozer Transport Truck
Make:	Assorted
Model:	
Special Equipment:	
Special Moving Requirements:	
Rate w/Operator:	
Wet: (with fuel):	\$1.50 / mile
Dry: (receiving State Supply fuel)	
Per Diem Rate for operator:	

EQUIPMENT (FIREFIGHTING)

Type:	5-Ton Truck Tractor
Make:	International
Model:	4900
Special Equipment:	
Special Moving Requirements:	
Rate w/Operator:	
Wet: (with fuel):	\$2.50 / mile
Dry: (receiving State Supply fuel)	
Per Diem Rate for operator:	

Southern Area Interagency Mobilization Guide
Chapter 100 – Southeastern and South Central Compacts

APPENDIX H (Continued)
TEXAS FOREST SERVICE

EQUIPMENT (FIREFIGHTING)

Type:	Tractor Plow JD-350
Make:	John Deere
Model:	350
Special Equipment:	6-way tilt blade w/ fresco plow
Special Moving Requirements:	
Rate w/Operator: Wet: (with fuel): Dry: (receiving State Supply fuel)	\$540.00 / day
Per Diem Rate for operator:	

EQUIPMENT (FIREFIGHTING)

Type:	Tractor Plow JD-450 / JD-550 / JD-650
Make:	John Deere
Model:	450 / 550 / 650
Special Equipment:	Specify 6-way tilt or V-blade, w/ plow or ripper
Special Moving Requirements:	
Rate w/Operator: Wet: (with fuel): Dry: (receiving State Supply fuel) Per Diem Rate for operator:	\$610.00 / day

EQUIPMENT (FIREFIGHTING)

Type:	Tractor Plow JD-750
Make:	John Deere
Model:	750
Special Equipment:	Specify 6-way tilt or V-blade, w/ plow or ripper
Special Moving Requirements:	
Rate w/Operator: Wet: (with fuel): Dry: (receiving State Supply fuel) Per Diem Rate for operator:	\$680.00 / day

EQUIPMENT (FIREFIGHTING)

Type:	Type 3 Engine (4 WD)
Make:	International 4800
Model:	2001
Special Equipment:	
Special Moving Requirements:	
Rate w/Operator: Wet: (with fuel): Dry: (receiving State Supply fuel) Per Diem Rate for operator:	\$1.00 / mile plus \$530.00 / day

Southern Area Interagency Mobilization Guide
Chapter 100 – Southeastern and South Central Compacts

APPENDIX H (Continued)
TEXAS FOREST SERVICE

EQUIPMENT (FIREFIGHTING)

Type:	Type 6 Engine (4 WD)
Make:	Ford
Model:	F-450
Special Equipment:	
Special Moving Requirements:	
Rate w/Operator: Wet: (with fuel): Dry: (receiving State Supply fuel) Per Diem Rate for operator:	\$1.00 / mile plus \$325.00 / day

PERSONNEL (OVERHEAD)

Qualifications	Most ICS Positions
Standard Rate of Pay:	Varies by individual
Overtime Rate:	Time and a half for hours over 40 in a week.
Per Diem Rate:	\$36 per day for meals. Actual expenses for lodging up to \$80/day.

PERSONNEL (SUPPORT)

Qualifications	Transport drivers, Radio Technicians, Dispatchers, Mechanics, etc.
Standard Rate of Pay:	Varies by individual
Overtime Rate:	Time and a half for hours over 40 in a week.
Per Diem Rate:	\$36 per day for meals. Actual expenses for lodging up to \$80/day.
Per Diem Rate:	Actual Expenses

PERSONNEL (FIREFIGHTERS)

Qualifications	Dozer Operators, Engine Crewmembers, 20-person Handcrew with Leader.
Standard Rate of Pay:	Varies by individual
Overtime Rate:	Time and a half for hours over 40 in a week.
Per Diem Rate:	\$36 per day for meals. Actual expenses for lodging, up to \$80/day

Southern Area Interagency Mobilization Guide
Chapter 100 – Southeastern and South Central Compacts

APPENDIX H (Continued)
VIRGINIA DEPARTMENT OF FORESTRY

EQUIPMENT

Type:	Tractor-plow units w/crew (3 person)
Make:	John Deere
Special Equipment:	
Special Moving Requirements:	
Rate w/Operator:	\$65/hour + actual salary of crews Transport- \$1.00 per mile (2 hr/day minimum for equipment)
Wet (with fuel): Dry (receiving state supplying fuel)	
Per diem rate for Operator	\$44/day + lodging

EQUIPMENT

Type:	Type 6 Engine (4X4)
Make:	Hummer or Ford 450 Standard Chassis Engine
Special Equipment:	Class A Foam
Special Moving Requirements:	
Rate w/Operator:	\$25/hr + \$1.00/mile + actual salary of crews (2 hr/day minimum for equipment) \$1.00/mile for lowboy if needed
Wet (with fuel): Dry (receiving state supplying fuel)	
Per diem rate for Operator	\$44/day + lodging

Southern Area Interagency Mobilization Guide
Chapter 100 – Southeastern and South Central Compacts

APPENDIX H (Continued)
VIRGINIA DEPARTMENT OF FORESTRY

AIRCRAFT

Type:	Fixed wing aircraft
Make:	Cessna 310 (U3B)
Special Equipment:	
Passenger Capacity (excluding Pilot):	3
Load Capacity or Retardant Gallons:	
Rate w/Pilot: Wet (with fuel): Dry (receiving state supplying fuel Per diem rate for Pilot Special Requirements (mechanic to accompany, etc.)	\$185/hour + actual salary of pilot \$44/day + lodging

PERSONNEL

Qualifications:	Full-time personnel
Standard Pay Rate:	Actual salary
Overtime Rate:	Time and a half
Per Diem Rate	\$44/day + lodging
Special Considerations	

Southern Area Interagency Mobilization Guide

Chapter 100 – Southeastern and South Central Compacts

APPENDIX I

STATE FREQUENCIES

FLORIDA DIVISION OF FORESTRY

Radio Channel/Frequency Plan

Channel	FREQUENCY (MHZ)		Dispatch Center or Function
	RX	TX	
1	159.315	159.315	Mobile to Mobile
2	159.225	159.225	Tallahassee and Withlacoochee
3	159.240	159.240	Jacksonville, Myakka River and Forestry Youth Academy
4	159.270	159.270	Perry, Orlando and Blackwater
5	159.330	159.330	Suwannee and Lakeland
6	159.390	159.390	Gainesville(S), Usher and Everglades
7	159.405	159.405	Chipola River, Gainesville(N) and Okeechobee
8	159.450	159.450	Bunnell and Caloosahatchee
9	151.235	151.235	Tactical
10	151.295	151.295	Tactical
11	159.285	159.285	Southeastern Compact
12	151.235	151.285	Alpha Repeater
13	151.295	159.300	Bravo Repeater
14	169.175	169.175	USFS Dispatch*
15	169.900	169.900	USFS Fire
16	154.265	154.265	Fire Mutual Aid (Red Channel)
17	154.280	154.280	Fire Mutual Aid (White Channel)
18	154.295	154.295	Fire Mutual Aid (Blue Channel)
19	159.300	159.300	Base to Base
20	Reserved		
21	Reserved		

*Guard Tone Frequencies:

Apalachicola National Forest	136.5hz
Ocala National Forest	123.0hz
Osceola National Forest	

Southern Area Interagency Mobilization Guide

Chapter 100 – Southeastern and South Central Compacts

APPENDIX I (Continued)

Olustee Tower (South)	167.hz
Eddy Tower (North)	103.5hz

SOUTH CAROLINA FORESTRY COMMISSION

South Carolina State Radio Frequencies

Channel	FREQUENCY (MHZ)		Dispatch Center or Function
	RX	TX	
	159.285	159.270	State Tactical

NORTH CAROLINA DIVISION OF FOREST RESOURCES FREQUENCY DISTRIBUTION

LOWBAND FREQUENCIES

<u>District/Field Office</u>	<u>Primary</u>
------------------------------	----------------

D-1	R-3 Headquarters	4
D-2	Morganton Forestry Center	1
D-3	R-2 Headquarters	6
D-4		4
D-5	Goldsboro Forestry Center	8
D-6	Clayton Warehouse	7
D-7	R-1 Headquarters	3
D-8	Bladen Lakes State Forest	1
D-9		3
D-10		9
D-11		1
D-12		8
D-13		1

HIGHBAND FREQUENCIES

<u>Secondary</u>

7	D-1	151.256	MHz
3	D-2	151.160	MHz
4	D-3	151.190	MHz
7	D-4	151.265	MHz
9	D-5	151.310	MHz
3	D-6	151.475	MHz
6	D-7	151.205	MHz
9,6	D-8	151.280	MHz
	D-9	151.340	MHz
	D-10	151.205	MHz
	D-11	151.340	MHz
	D-12	151.400	MHz
8	D-13	151.190	MHz

Statewide Incident Frequencies - 2 and 5

<u>NCFS Frequency/Channel</u>	<u>MHz</u>	<u>All Channels use 131.8 PL Tone</u>
1	31.34	
2	31.42	
3	31.46	
4	31.54	

Southern Area Interagency Mobilization Guide
Chapter 100 – Southeastern and South Central Compacts

5	30.98
6	31.22
7	31.26
8	31.38
9	31.50